

Antipsychotic Drugs by LCMS using Kinetex 2.6u Biphenyl 50x2.1mm

Column: Kinetex® 2.6 µm Biphenyl 100 Å, LC Column 50 x 2.1 mm, Ea

Dimensions: 50 x 2.1 mm ID

Order No: 00B-4622-AN

Elution Type: Gradient

Eluent A: 0.1% formic acid in water

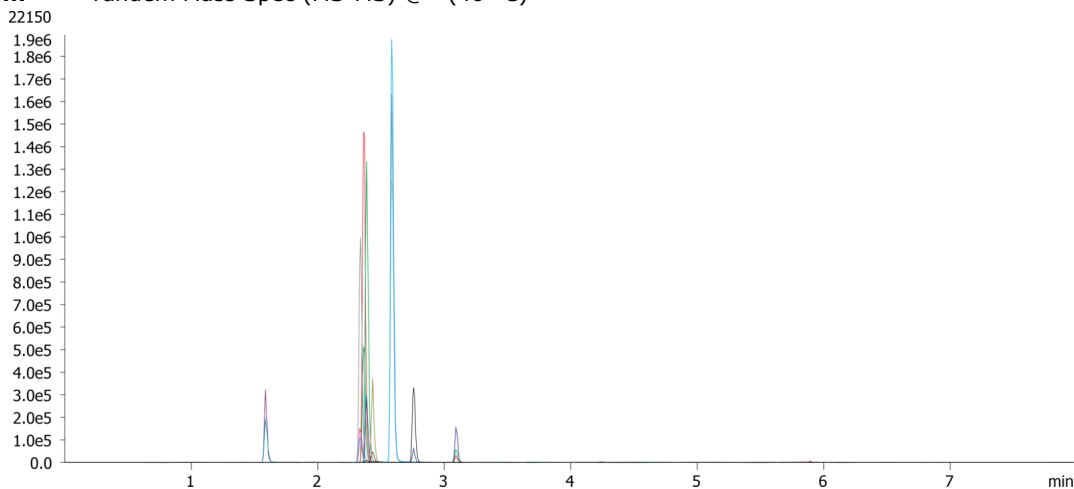
Eluent B: 0.1% formic acid in acetonitrile

Gradient Profile:	Step No.	Time (min)	Pct A	Pct B
	1	0	95	5
	2	5	5	95
	3	5.1	95	5
	4	8	95	5

Flow Rate: 500 mL/min

Col. Temp.: 40 °C

Detection: Tandem Mass Spec (MS-MS) @ (40 °C)



Products used in this application:



ANALYTES:

- 1** Olanzapine
Retention Time: 1.59 min
- 2** Clozapine
Retention Time: 2.34 min
- 3** 9-hydroxy Risperidone
Retention Time: 2.37 min
- 4** Risperidone
Retention Time: 2.39 min
- 5** Norquetiapine
Retention Time: 2.43 min
- 6** Quetiapine
Retention Time: 2.59 min
- 7** Ziprasidone
Retention Time: 2.76 min
- 8** Aripiprazole
Retention Time: 3.09 min

