

Stimulants by LCMS using Kinetex 5u Biphenyl 50x3.0mm

Column: Kinetex® 5 µm Biphenyl 100 Å LC Column 50 x 3.0 mm, Ea

Dimensions: 50 x 3 mm ID

Order No: 00B-4627-Y0

Elution Type: Gradient

Eluent A: Water with 0.1% formic acid

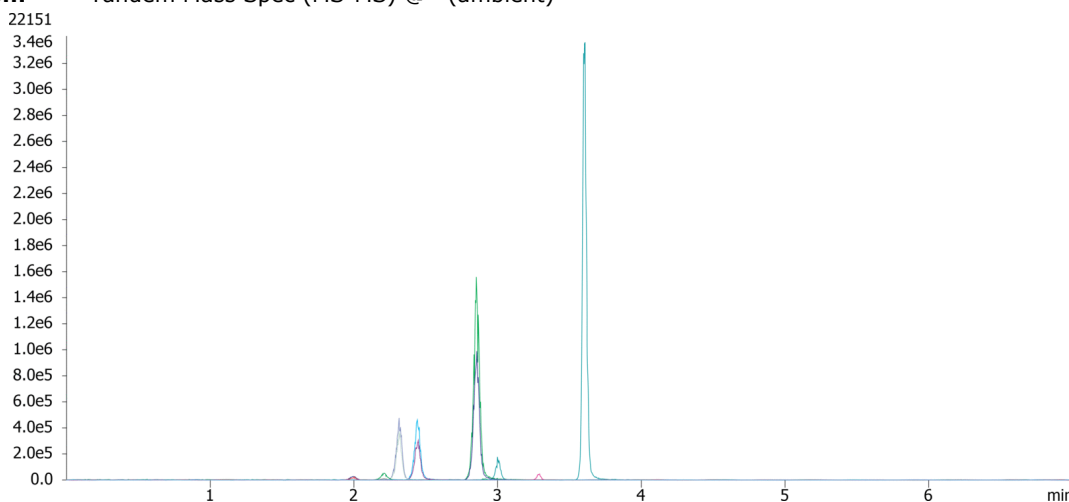
Eluent B: Methanol with 0.1% formic acid

Gradient Profile:	Step No.	Time (min)	Pct A	Pct B
	1	0	90	10
	2	0.5	90	10
	3	2	75	25
	4	4.5	20	80
	5	4.51	15	85
	6	5.5	15	85
	7	5.51	90	10
	8	7	90	10

Flow Rate: 0.6 mL/min

Col. Temp.: 40 °C

Detection: Tandem Mass Spec (MS-MS) @ (ambient)



ANALYTES:

- 1 Amphetamine
Retention Time: 2.71 min
- 2 Methamphetamine
Retention Time: 3.85 min
- 3 Phentermine
Retention Time: 3.47 min
- 4 Ritalinic acid
Retention Time: 4.05 min
- 5 Methylphenidate
Retention Time: 4.31 min
- 6 MDMA
Retention Time: 3.7 min
- 7 MDA
Retention Time: 3.36 min
- 8 MDEA
Retention Time: 3.35 min

©2025 Phenomenex, Inc. All rights reserved.

For more information contact your Phenomenex Representative at support@phenomenex.com



Phenomenex products are available worldwide.

www.phenomenex.com

support@phenomenex.com



Products used in this application:

