

HPLC Application

ID No.: 22152

Bath salts and Piperazines using Kinetex 2.6u Biphenyl 50x3.0mm

Column: Kinetex[®] 2.6 μ m Biphenyl 100 \AA , LC Column 50 x 3.0 mm, Ea

Dimensions: 50 x 3 mm ID

Order No: 00B-4622-Y0

Elution Type: Gradient

Eluent A: Water with 0.1% formic acid

Eluent B: Methanol with 0.1% formic acid

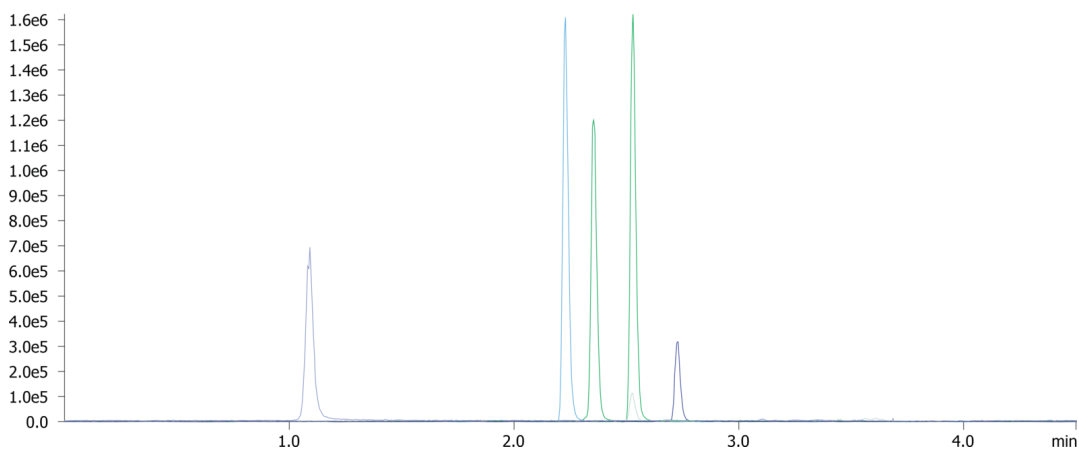
Gradient Profile:	Step No.	Time (min)	Pct A	Pct B
	1	0	90	10
	2	2.5	5	95
	3	3	5	95
	4	3.1	90	10
	5	4.5	90	10

Flow Rate: 0.6 mL/min

Col. Temp.: ambient

Detection: Electrospray Mass Spec (ESMS) @ 0.000000000 (ambient)

22152



ANALYTES:

- 1** BZP
Retention Time: 1.09 min
- 2** Methylone
Retention Time: 2.23 min
- 3** Mephedrone
Retention Time: 2.35 min
- 4** mCPP
Retention Time: 2.53 min
- 5** TFMPP
Retention Time: 2.53 min
- 6** MDPV
Retention Time: 2.73 min



Kinetex[®]
Ultra-High Performance
on Any LC System

Products used in this application:

