

# HPLC Application

ID No.: 22153

## Wine Polyphenols on Kinetex 2.6 $\mu$ m Biphenyl (100 ng/mL std)

**Column:** Kinetex<sup>®</sup> 2.6  $\mu$ m Biphenyl 100  $\text{\AA}$ , LC Column 50 x 2.1 mm, Ea

**Dimensions:** 50 x 2.1 mm ID

**Order No:** 00B-4622-AN

**Elution Type:** Gradient

**Eluent A:** 5mM ammonium acetate w/ 0.5% acetic acid

**Eluent B:** 5mM ammonium acetate in ACN w/ 0.5% acetic acid

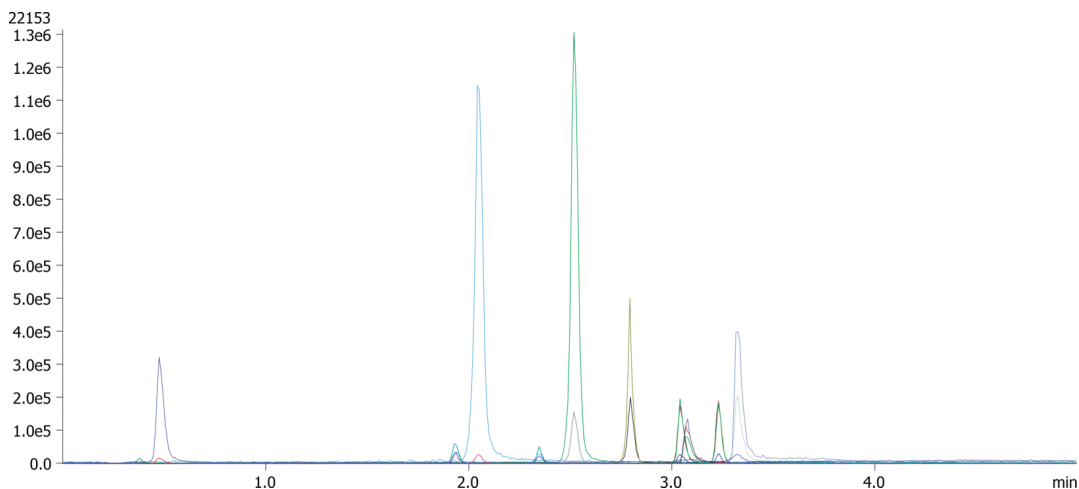
<b>Gradient Profile:</b>	<b>Step No.</b>	<b>Time (min)</b>	<b>Pct A</b>	<b>Pct B</b>
	<b>1</b>	0	98	2
	<b>2</b>	3	20	80
	<b>3</b>	5	20	80

**Flow Rate:** 0.5 mL/min

**Col. Temp.:** ambient

**Detection:** Tandem Mass Spec (MS-MS) @ (ambient)

**Detector Info:** API 5000



Products used in this application:



## Wine Polyphenols on Kinetex 2.6 $\mu$ m Biphenyl (100 ng/mL std)

### ANALYTES:

- 1 Gallic acid
- 2 Catechin
- 3 Caffeic acid
- 4 Epicatechin
- 5 p-Coumaric acid
- 6 Ferulic acid
- 7 trans-Resveratrol
- 8 Myrcetin
- 9 cis-Resveratrol
- 10 Quercetin

