

## Antiepileptics in methanol using Kinetex 2.6u Biphenyl 50x2.1mm

**Column:** Kinetex® 2.6 µm Biphenyl 100 Å, LC Column 50 x 2.1 mm, Ea

**Dimensions:** 50 x 2.1 mm ID

**Order No:** 00B-4622-AN

**Elution Type:** Gradient

**Eluent A:** Water with 0.1% formic acid

**Eluent B:** Methanol with 0.1% formic acid

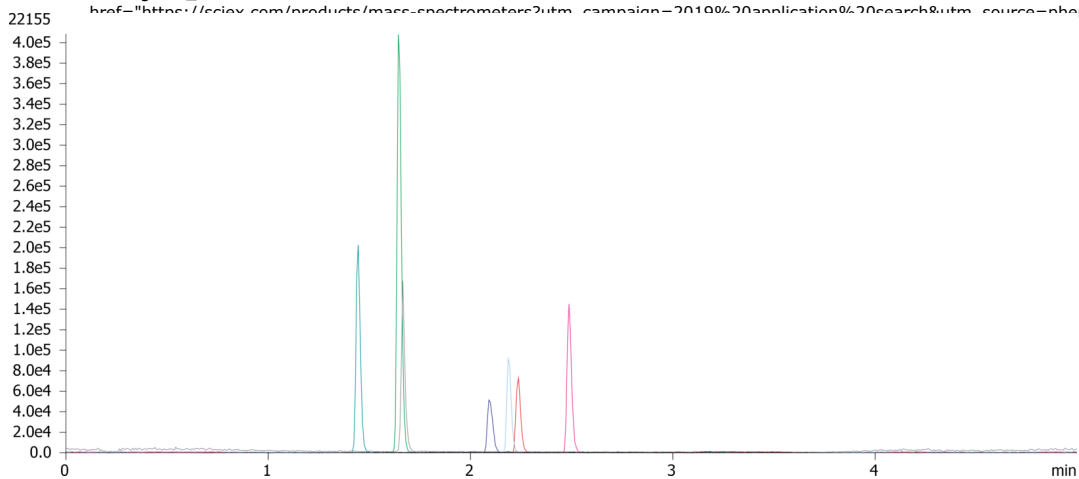
Gradient Profile:	Step No.	Time (min)	Pct A	Pct B
	1	0	98	2
	2	3	5	95
	3	3.1	98	2
	4	6	98	2

**Flow Rate:** 0.5 mL/min

**Col. Temp.:** 40 °C

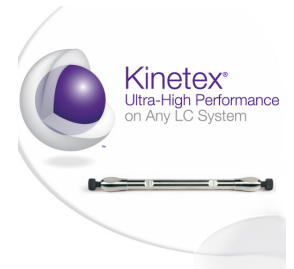
**Detection:** Tandem Mass Spec (MS-MS) @ (40 °C)

**Detector Info:** <a target="\_blank" href="https://sciex.com/products/mass-spectrometers?utm\_campaign=2019%20application%20search&utm\_source=phenomenex&utm\_medium=referral">SCIEX</a>



### ANALYTES:

- 1** Pregabalin  
Retention Time: 1.44 min
- 2** Gabapentin  
Retention Time: 1.65 min
- 3** Levetiracetam  
Retention Time: 1.67 min
- 4** Lamotrigine  
Retention Time: 2.09 min
- 5** Zonisamide  
Retention Time: 2.19 min
- 6** Lacosamide  
Retention Time: 2.24 min
- 7** MHD  
Retention Time: 2.49 min



Products used in this application:

