

Fast analysis of stimulants by LCMSMS using Kinetex 5u Biphenyl 50x2.1mm

Column: Kinetex® 5 µm Biphenyl 100 Å LC Column 50 x 2.1 mm, Ea

Dimensions: 50 x 2.1 mm ID

Order No: 00B-4627-AN

Elution Type: Gradient

Eluent A: Water with 0.1% formic acid

Eluent B: Methanol with 0.1% formic acid

Gradient Profile:	Step No.	Time (min)	Pct A	Pct B
	1	0	90	10
	2	3	10	90
	3	4	10	90
	4	4.1	90	10
	5	5.5	90	10

Flow Rate: 0.6 mL/min

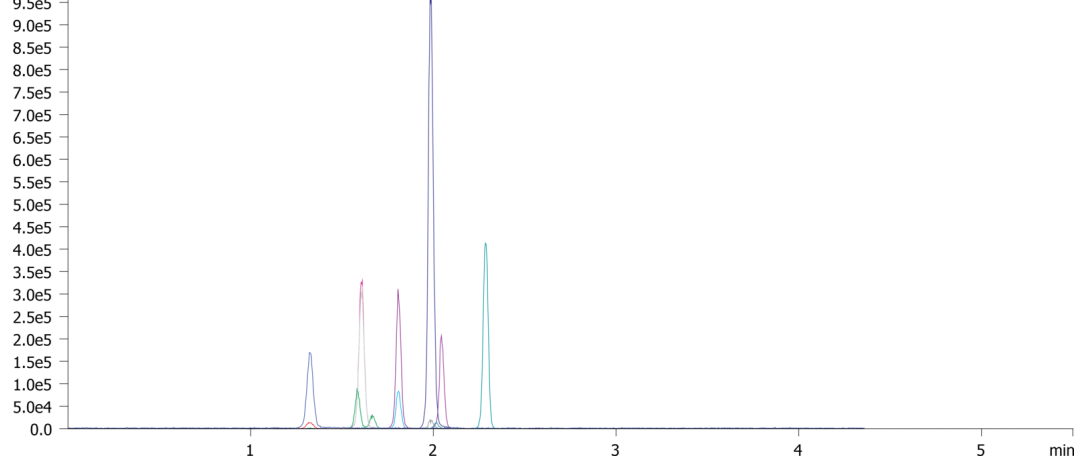
Col. Temp.: 40 °C

Detection: Tandem Mass Spec (MS-MS) @ (ambient)

Detector Info:

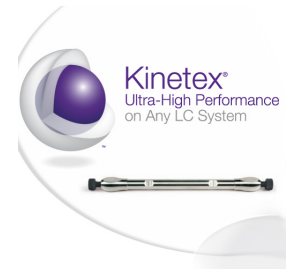
<a target="_blank"

href="https://sciex.com/products/mass-spectrometers?utm_campaign=2019%20application%20search&utm_source=phenomenex&utm_medium=referral">SCIEX<



ANALYTES:

- 1 Amphetamine
- 2 Methamphetamine
- 3 Phentermine
- 4 Methylphenidate
- 5 MDMA
- 6 MDEA
- 7 MDA



Products used in this application:

