

Neonicotinoids using Kinetex 2.6u Biphenyl 50x2.1mm

Column: Kinetex® 2.6 µm Biphenyl 100 Å, LC Column 50 x 2.1 mm, Ea

Dimensions: 50 x 2.1 mm ID

Order No: 00B-4622-AN

Elution Type: Gradient

Eluent A: Water with 0.1% Formic acid

Eluent B: Acetonitrile with 0.1% Formic acid

Gradient Profile:	Step No.	Time (min)	Pct A	Pct B
	1	0	95	5
	2	3	30	70

Flow Rate: 0.6 mL/min

Col. Temp.: 40 °C

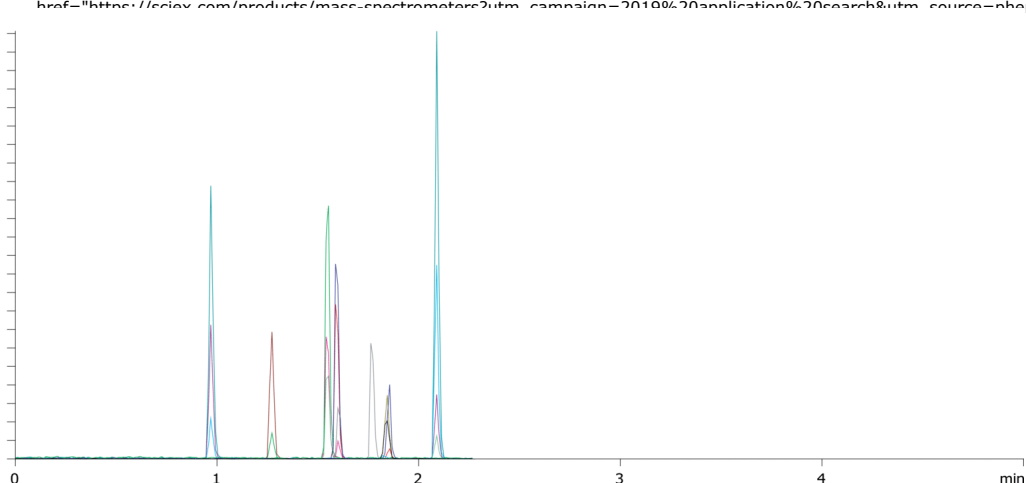
Detection: Tandem Mass Spec (MS-MS) @ (ambient)

Detector Info:

<a target="_blank"

22160

4.6e5
4.4e5
4.2e5
4.0e5
3.8e5
3.6e5
3.4e5
3.2e5
3.0e5
2.8e5
2.6e5
2.4e5
2.2e5
2.0e5
1.8e5
1.6e5
1.4e5
1.2e5
1.0e5
8.0e4
6.0e4
4.0e4
2.0e4
0.0



Products used in this application:



ANALYTES:

- 1** Dinotefuran
Retention Time: 0.97 min
- 2** Nitenpyram
Retention Time: 1.27 min
- 3** Thiamethoxam
Retention Time: 1.55 min
- 4** Clothianidin
Retention Time: 1.6 min
- 5** Acetamiprid
Retention Time: 1.85 min
- 6** Thiacloprid
Retention Time: 2.09 min
- 7** Imidacloprid
Retention Time: 2.09 min

