

HPLC Application

ID No.: 22161

Antibiotics by LCMS using Kinetex 2.6u Biphenyl 50x2.1mm

Column: Kinetex® 2.6 µm Biphenyl 100 Å, LC Column 50 x 2.1 mm, Ea

Dimensions: 50 x 2.1 mm ID

Order No: 00B-4622-AN

Elution Type: Gradient

Eluent A: Water with 0.1% formic acid

Eluent B: Methanol with 0.1% formic acid

Gradient Profile:	Step No.	Time (min)	Pct A	Pct B
	1	0	100	0
	2	5	0	100
	3	7	0	100

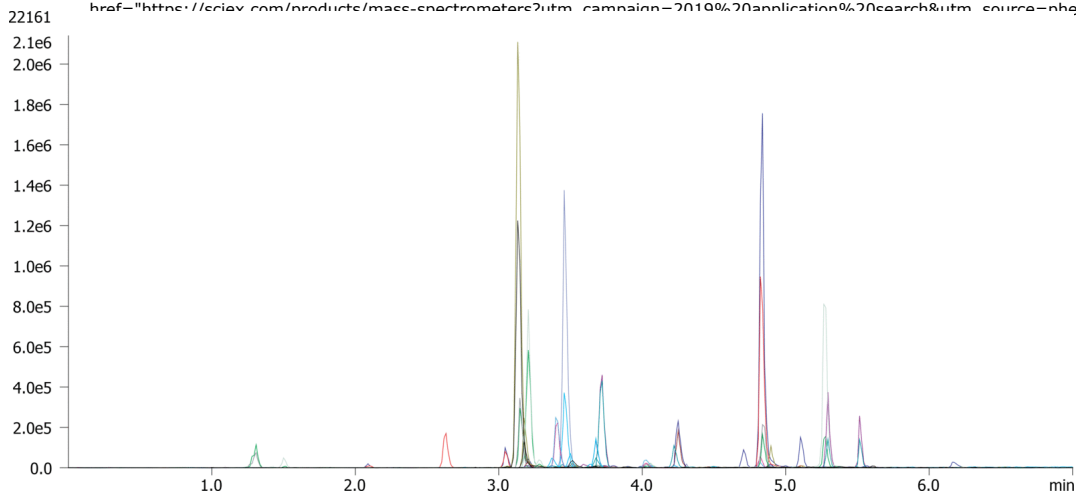
Flow Rate: 0.5 mL/min

Col. Temp.: ambient

Detection: Tandem Mass Spec (MS-MS) @ (ambient)

Detector Info:

SCIEX



Products used in this application:



Antibiotics by LCMS using Kinetex 2.6u Biphenyl 50x2.1mm

ANALYTES:

- | | | | |
|-----------|----------------------|-----------|-----------|
| 1 | Sulfaguanidine | 41 | Rifaximin |
| 2 | Florfenicol | | |
| 3 | Amoxicillin | | |
| 4 | Lincomycin | | |
| 5 | Sulfadiazine | | |
| 6 | Thiabendazole | | |
| 7 | Trimethoprim | | |
| 8 | Sulfathiazole | | |
| 9 | Sulfapyridine | | |
| 10 | Cefapirin | | |
| 11 | Tetracycline | | |
| 12 | Sulfamerazine | | |
| 13 | Clenbuterol | | |
| 14 | Marbofloxacin | | |
| 15 | Epichlortetracycline | | |
| 16 | Danofloxacin | | |
| 17 | Sulfamethoxazole | | |
| 18 | Ciprofloxacin | | |
| 19 | Cefalexin | | |
| 20 | Sulfamethazine | | |
| 21 | Neospiramycin | | |
| 22 | Enrofloxacin | | |
| 23 | Spiramycin | | |
| 24 | Chlortetracycline | | |
| 25 | Difloxacin | | |
| 26 | Cefazolin | | |
| 27 | Doxycycline | | |
| 28 | Sulfaquinoxaline | | |
| 29 | Cefoperazone | | |
| 30 | Tiamulin | | |
| 31 | Dexamethasone | | |
| 32 | Fenbendazole | | |
| 33 | Oxacillin | | |
| 34 | Nafcillin | | |
| 35 | Cloxacillin | | |
| 36 | Valnemulin | | |
| 37 | Dicloxacillin | | |
| 38 | Flumequine | | |
| 39 | Bute | | |
| 40 | Phoxim | | |

