

HPLC Application

ID No.: 22383

Valerian extract on Synergi Max-RP

Column: Synergi[™] 4 µm Max-RP 80 Å, LC Column 150 x 4.6 mm, Ea

Dimensions: 150 x 4.6 mm ID

Order No: 00F-4337-E0

Elution Type: Isocratic

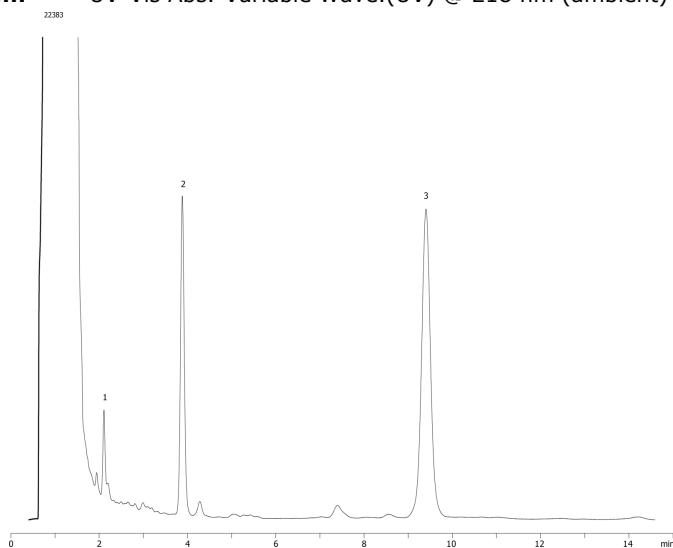
Eluent A: 60:40:0.1 Acetonitrile:Water:Phosphoric acid premix

Gradient	Step No.	Time (min)	Pct A
Profile:	1	0	100

Flow Rate: 1.5 mL/min

Col. Temp.: ambient

Detection: UV-Vis Abs.-Variable Wave.(UV) @ 218 nm (ambient)



ANALYTES:

- 1 Hydroxyvalerenic acid
- 2 Acetoxyvalerenic acid
- 3 Valeric acid

