

HPLC Application

ID No.: 22582

TCA's using Kinetex 5u C18 150x4.6mm

Column: Kinetex[®] 5 μ m C18 100 Å, LC Column 150 x 4.6 mm, Ea

Dimensions: 150 x 4.6 mm ID

Order No: 00F-4601-E0

Elution Type: Isocratic

Eluent A: 20mM Potassium Phosphate pH7.0

Eluent B: 50:50 Acetonitrile:Methanol

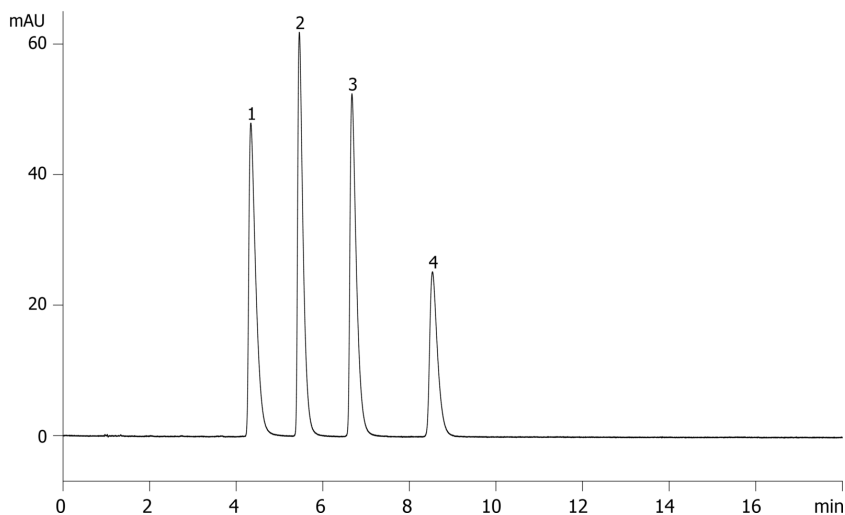
| Gradient Profile: | Step No. | Time (min) | Pct A | Pct B |
|-------------------|----------|------------|-------|-------|
| | 1 | 0 | 30 | 70 |

Flow Rate: 1.5 mL/min

Col. Temp.: 30 °C

Detection: UV-Vis Abs.-Diode Array (PDA) @ (ambient)

22582



ANALYTES:

- 1** Imipramine
Retention Time: 4.337 min
- 2** Nortriptyline
Retention Time: 5.458 min
- 3** Amitriptyline
Retention Time: 6.673 min
- 4** Clomipramine
Retention Time: 8.533 min



Products used in this application:

