

EPA 504 by GC/ECD on ZB-CLPesticides-2 (Helium Gas)

Column: Zebtron ZB-CLPesticides-2 Column 30m x 0.32mm x 0.25µm , Ea

Phase: Proprietary Pesticides Phase

Dimensions: 30 meters x 0.32 mm x 0.25 µm

Order No: 7HM-G029-11

Oven Profile: 30 °C for 2 min to 200 °C @ 30 °C/min

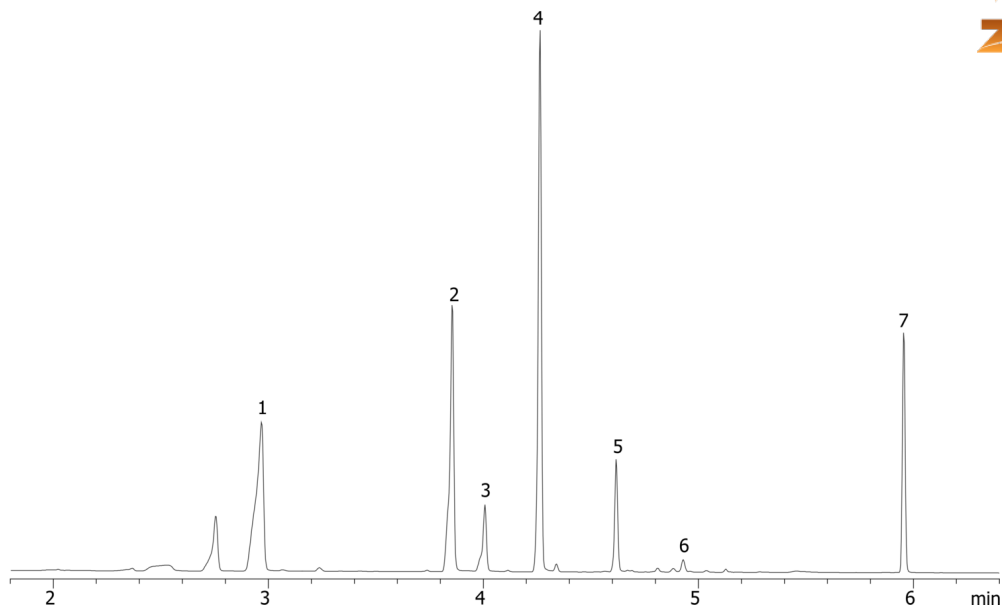
Carrier Gas: Constant Flow Helium, 60 cm/sec

Injection: Splitless :1 2 µL @ 200°C

Detection: Electron Capture (ECD) (220°C)

Analyst Note: 2.0 µL pulsed splitless @ 25 psi for 0.5 min

22624



Products used in this application:



ANALYTES:

- 1 Bromodichloromethane
- 2 Chlorodibromomethane
- 3 1,2-Dibromomethane (EDB)
- 4 1,1,1,2-Tetrachloroethane
- 5 Bromoform
- 6 1,2,3-Trichloropropane
- 7 1,2-Dibromo-3-chloropropane (DBCP)

