

GC Application

ID No.: 22636

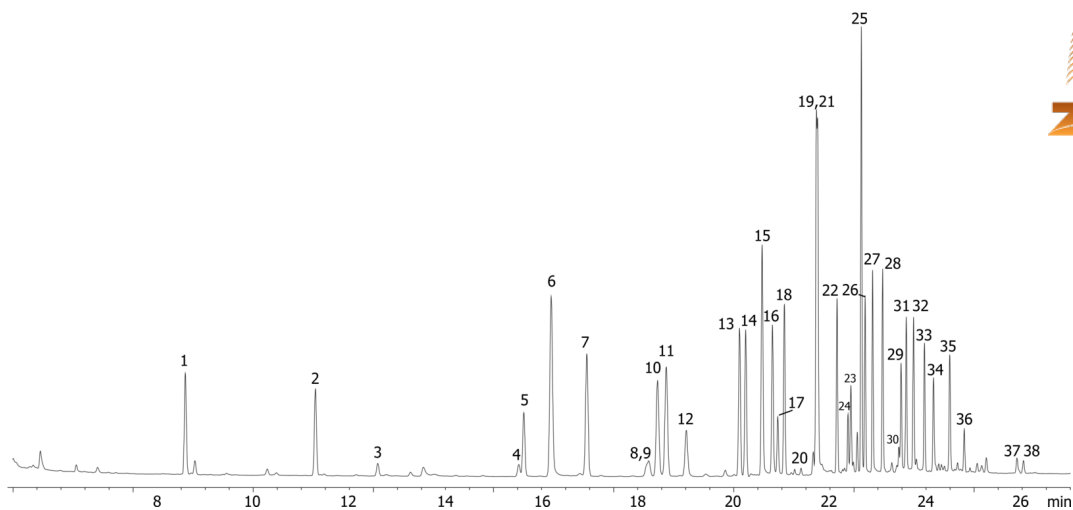
EPA 508 by GC/ECD on ZB-CLPesticides-2 (Helium Gas)

Column: Zebtron ZB-CLPesticides-2 Column 30m x 0.32mm x 0.25µm , Ea
Phase: Proprietary Pesticides Phase
Dimensions: 30 meters x 0.32 mm x 0.25 µm
Order No: 7HM-G029-11
Oven Profile: 80 °C for 0.5 to 155 °C @ 19 °C/min for 1 min to 210 °C @ 4 °C/min to 310 °C @ 25 °C/min for 10 min
Carrier Gas: Constant Flow Helium, 26 cm/sec
Injection: Splitless :1 2 µL @ 250°C
Detection: Electron Capture (ECD) (325°C)

22636



Products used in this application:



EPA 508 by GC/ECD on ZB-CLPesticides-2 (Helium Gas)

ANALYTES:

- 1 Hexachlorocyclopentadiene
- 2 Etridiazole
- 3 Chlorneb
- 4 Propachlor
- 5 Trifluralin
- 6 Hexachlorobenzene
- 7 a-BHC
- 8 Simazine
- 9 Atrazine
- 10 Pentachloronitrobenzene (IS)
- 11 g-BHC
- 12 b-BHC
- 13 d-BHC
- 14 Heptachlor
- 15 Chlorothalonil
- 16 Metribuzin
- 17 Alachlor
- 18 Aldrin
- 19 4,4'-Dibromobiphenyl (SS)
- 20 Metachlor
- 21 DCPA (dacthal)
- 22 Heptachlor epoxide
- 23 trans-Chlordane
- 24 Cyanazine
- 25 cis-Chlordane
- 26 Endosulfan I
- 27 4,4'-DDE
- 28 Dieldrin
- 29 Endrin
- 30 Chlorobenzilate
- 31 4,4'-DDD
- 32 Endosulfan II
- 33 4,4'-DDT
- 34 Endrin aldehyde
- 35 Endosulfan sulfate
- 36 Methoxychlor
- 37 cis-Permethrin
- 38 trans-Permethrin

