

HPLC Application

ID No.: 22690

Terlipressin crude with 0.1% TFA + ACN on knx 5um c18 50x4.6

Column: Kinetex® 5µm C18 100 Å, LC Column 50 x 4.6 mm, Ea

Dimensions: 50 x 4.6 mm ID

Order No: 00B-4601-E0

Elution Type: Gradient

Eluent A: 0.1% TFA in water

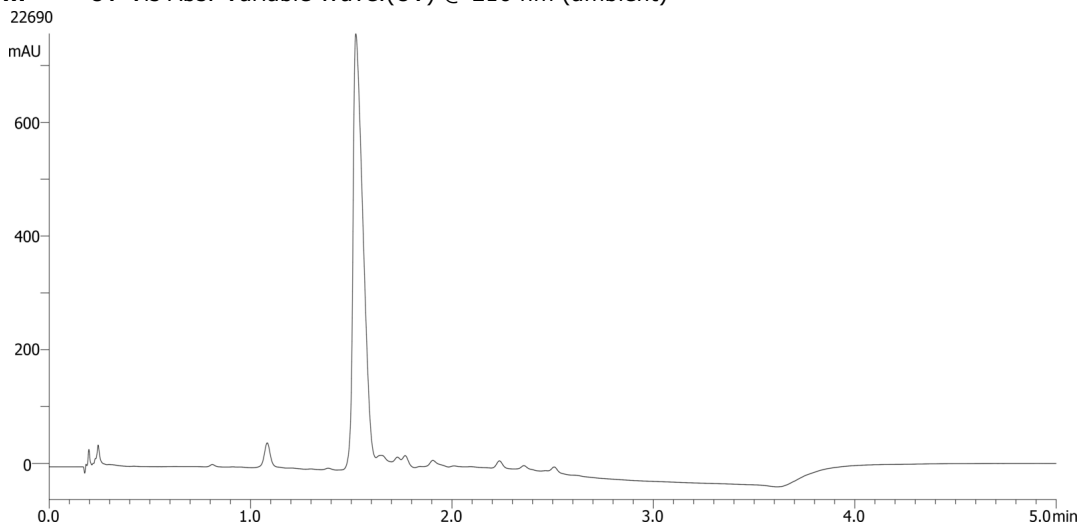
Eluent B: acn

Gradient Profile:	Step No.	Time (min)	Pct A	Pct B
	1	0	90	10
	2	3	60	40
	3	3.1	90	10
	4	5	90	10

Flow Rate: 2 mL/min

Col. Temp.: ambient

Detection: UV-Vis Abs.-Variable Wave.(UV) @ 210 nm (ambient)



ANALYTES:

1 terlipressin

Retention Time: 1.5 min



Products used in this application:

