

HPLC Application

ID No.: 22692

Terlipressin step 2 qc with 0.1% TFA + ACN on knx 5um c18 50x4.6

Column: Kinetex[®] 5 μ m C18 100 Å, LC Column 50 x 4.6 mm, Ea

Dimensions: 50 x 4.6 mm ID

Order No: 00B-4601-E0

Elution Type: Gradient

Eluent A: 0.1% TFA in water

Eluent B: acn

| Gradient Profile: | Step No. | Time (min) | Pct A | Pct B |
|-------------------|----------|------------|-------|-------|
| | 1 | 0 | 90 | 10 |
| | 2 | 3 | 60 | 40 |
| | 3 | 3.1 | 90 | 10 |
| | 4 | 5 | 90 | 10 |

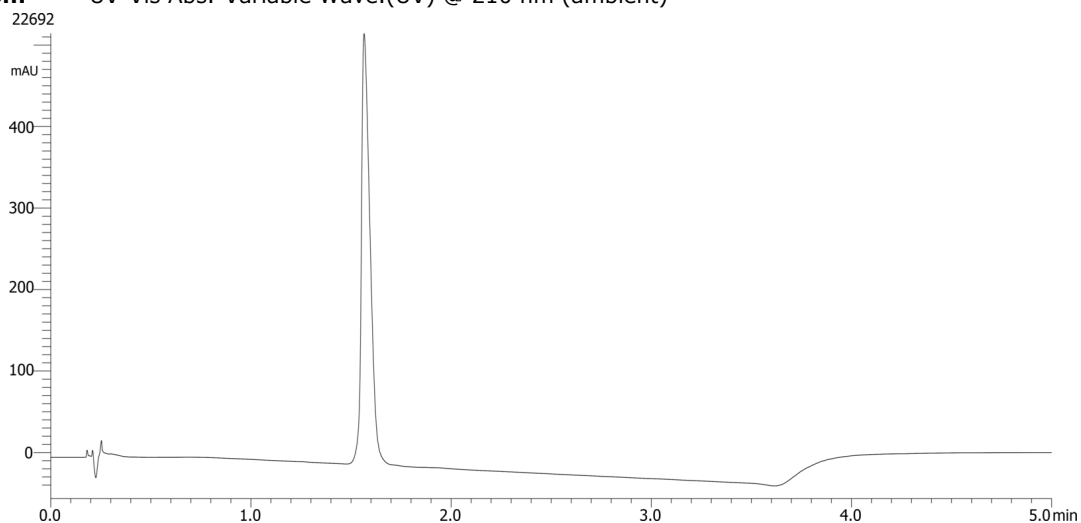
Flow Rate: 2 mL/min

Col. Temp.: ambient

Detection: UV-Vis Abs.-Variable Wave.(UV) @ 210 nm (ambient)



Products used in this application:



ANALYTES:

1 terlipressin

Retention Time: 1.5 min