

HPLC Application

ID No.: 22698

IgG1 (Ascites Fluid) Digest in TFA: Aeris PEPTIDE 2.6u XB-C18 250 x 2.1 mm

Column: Aeris™ 2.6 µm PEPTIDE XB-C18 100 Å, LC Column 250 x 2.1 mm, Ea

Dimensions: 250 x 2.1 mm ID

Order No: 00G-4505-AN

Elution Type: Gradient

Eluent A: 0.1% TFA/2% AcCN/in water

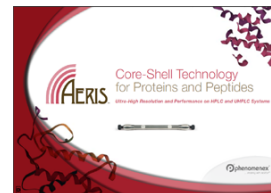
Eluent B: 0.09%TFA in 90%AcCN/10% water

| Gradient Profile: | Step No. | Time (min) | Pct A | Pct B |
|--------------------------|-----------------|-------------------|--------------|--------------|
| | 1 | 0 | 97 | 3 |
| | 2 | 2 | 97 | 3 |
| | 3 | 49 | 50 | 50 |
| | 4 | 54 | 5 | 95 |

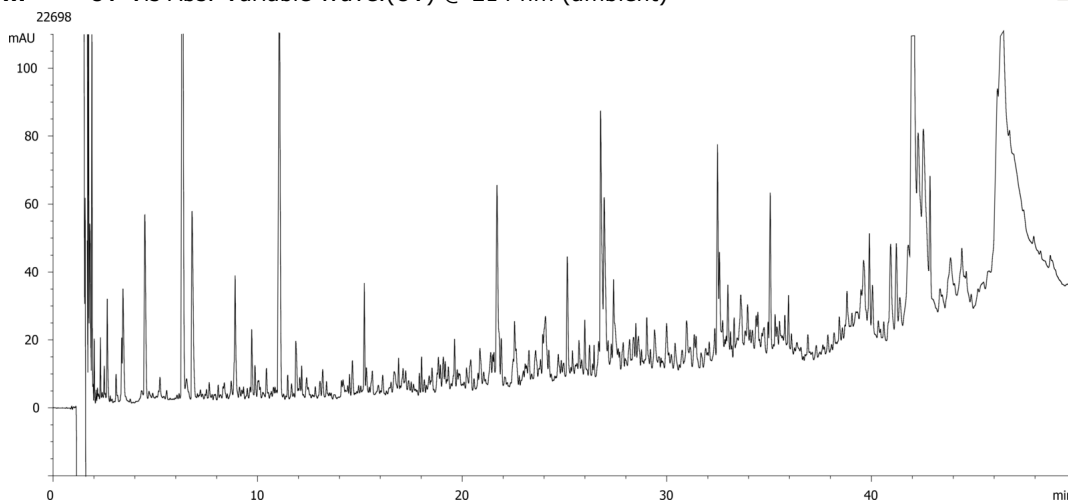
Flow Rate: 0.4 mL/min

Col. Temp.: 40 °C

Detection: UV-Vis Abs.-Variable Wave.(UV) @ 214 nm (ambient)



Products used in this application:



ANALYTES:

- 1 IgG1 (Ascites Fluid) R+A Tryptic Digest

