

Analysis of crude peptide mixture on Aeris PEPTIDE 2.6u XB-C18 150x4.6mm

Column: Aeris™ 2.6 µm PEPTIDE XB-C18 100 Å, LC Column 150 x 4.6 mm, Ea

Dimensions: 150 x 4.6 mm ID

Order No: 00F-4505-E0

Elution Type: Gradient

Eluent A: Water with 0.1% TFA

Eluent B: Acetonitrile with 0.1% TFA

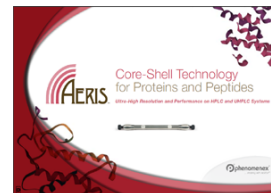
Gradient Profile:	Step No.	Time (min)	Pct A	Pct B
	1	0	85	15
	2	10	5	95

Flow Rate: 1 mL/min

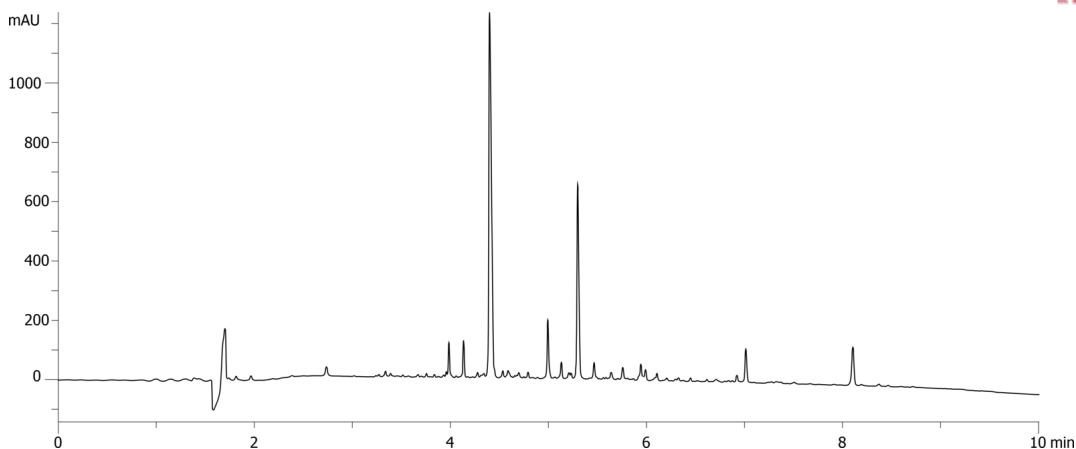
Col. Temp.: ambient

Detection: UV-Vis Abs.-Variable Wave.(UV) @ 210 nm (ambient)

22707



Products used in this application:



ANALYTES:

- 1 Crude peptide mix

