

## Mycotoxins extracted from corn using roQ by LC/MS/MS (Positive mode)

**Column:** Kinetex® 2.6 µm XB-C18 100 Å, LC Column 50 x 2.1 mm, Ea

**Dimensions:** 50 x 2.1 mm ID

**Order No:** 00B-4496-AN

**Elution Type:** Gradient

**Eluent A:** 5 mM ammonium acetate w/ 0.5% acetic acid

**Eluent B:** 5 mM ammonium acetate in methanol w/ 0.5% acetic acid

Gradient Profile:	Step No.	Time (min)	Pct A	Pct B
	1	0	95	5
	2	2	95	5
	3	5	20	80
	4	5.2	2	98
	5	8	2	98

**Flow Rate:** 0.45 mL/min

**Col. Temp.:** ambient

**Detection:** Tandem Mass Spec (MS-MS) @ (ambient)

**Detector Info:** API 5000

**Analyst Note:** roQ extraction:

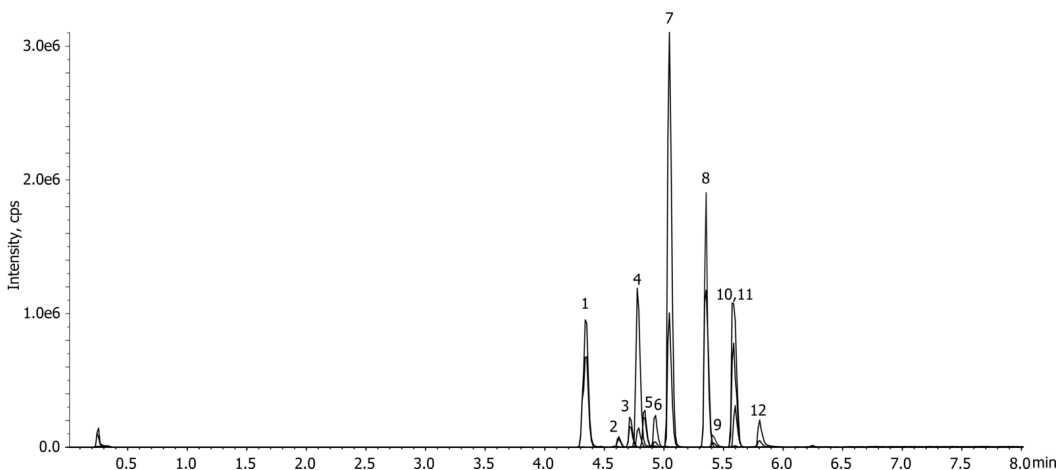
- 1) 5 g of corn is extracted using KSO-8909 with 10 mL of water and 10 mL of ACN with 1.0 % formic acid.
2. KSO-8924 is used for dSPE clean up.



Products used in this application:



22711



## Mycotoxins extracted from corn using roQ by LC/MS/MS (Positive mode)

### ANALYTES:

- 1** 15-Acetyldeoxynivalenol
- 2** Aflatoxin G2
- 3** Aflatoxin G1
- 4** Unknown Interference
- 5** Aflatoxin B2
- 6** Aflatoxin B1
- 7** Diacetoxyscirpenol
- 8** HT2-Toxin
- 9** Fuminosin B1
- 10** T2-Toxin
- 11** Ochratoxin A
- 12** Fuminosin B2

