

# HPLC Application

ID No.: 22713

## Opiates at low pH using Kinetex 5u Biphenyl 50 x 2.1 mm

**Column:** Kinetex<sup>®</sup> 5  $\mu$ m Biphenyl 100 Å LC Column 50 x 2.1 mm, Ea

**Dimensions:** 50 x 2.1 mm ID

**Order No:** 00B-4627-AN

**Elution Type:** Gradient

**Eluent A:** Water with 0.1% Formic acid

**Eluent B:** Methanol with 0.1% Formic acid

Gradient Profile:	Step No.	Time (min)	Pct A	Pct B
	1	0	90	10
	2	0.5	90	10
	3	2	75	25
	4	4.5	20	80
	5	4.51	15	85
	6	5.5	15	85
	7	5.51	90	10
	8	7	90	10

**Flow Rate:** 500 mL/min

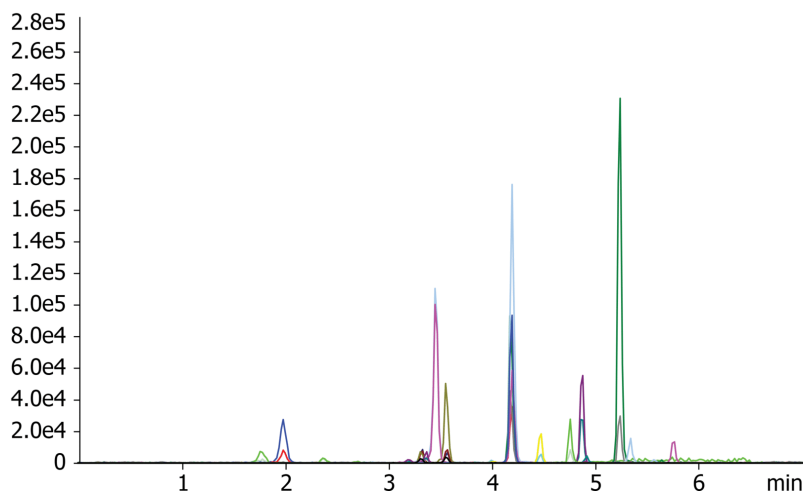
**Col. Temp.:** 40 °C

**Detection:** Tandem Mass Spec (MS-MS) @ (ambient)

**Detector Info:** [https://sciex.com/products/mass-spectrometers?utm\\_campaign=2019%20application%20search&utm\\_source=phenomenex&utm\\_medium=referral](https://sciex.com/products/mass-spectrometers?utm_campaign=2019%20application%20search&utm_source=phenomenex&utm_medium=referral)>SCIEX<



Products used in this application:



## Opiates at low pH using Kinetex 5u Biphenyl 50 x 2.1 mm

### ANALYTES:

- 1 Meprobamate
- 2 Normepiridine
- 3 Mepiridine
- 4 Carisoprodol
- 5 Tramadol
- 6 Hydromorphone
- 7 Morphine
- 8 Codeine
- 9 Hydrocodone
- 10 Oxymorphone
- 11 Methadone
- 12 Oxycodone
- 13 6-MAM
- 14 Norbuprenorphine
- 15 Buprenorphine

