

HPLC Application

ID No.: 22715

Opiates at high pH using Kinetex 5u EVO C18 50 x 2.1 mm

Column: Kinetex[®] 5 μ m EVO C18 100 Å, LC Column 50 x 2.1 mm, Ea

Dimensions: 50 x 2.1 mm ID

Order No: 00B-4633-AN

Elution Type: Gradient

Eluent A: 10mM Ammonium Bicarbonate

Eluent B: Methanol

Gradient Profile:	Step No.	Time (min)	Pct A	Pct B
	1	0	90	10
	2	0.5	90	10
	3	2	75	25
	4	4.5	20	80
	5	4.51	15	85
	6	5.5	15	85
	7	5.51	90	10
	8	7	90	10

Flow Rate: 500 μ L/min

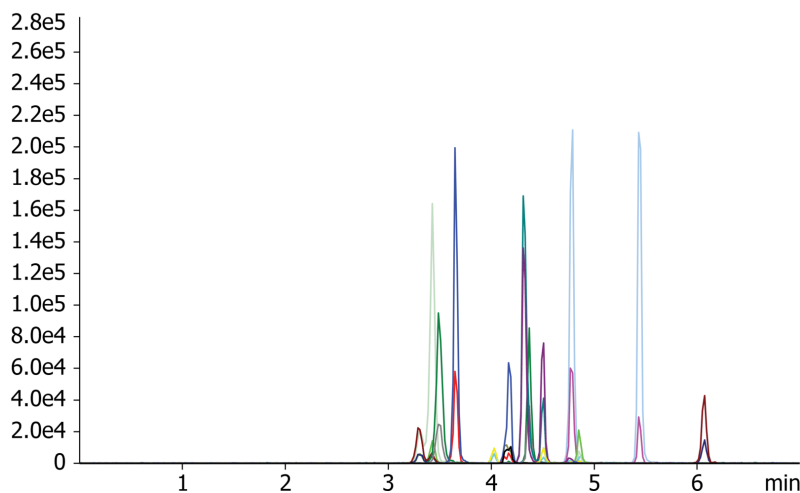
Col. Temp.: 40 °C

Detection: Tandem Mass Spec (MS-MS) @ (ambient)

Detector Info: SCIEX
22715



Products used in this application:



Opiates at high pH using Kinetex 5u EVO C18 50 x 2.1 mm

ANALYTES:

- 1 Meprobamate
- 2 Normepiridine
- 3 Mepiridine
- 4 Carisoprodol
- 5 Tramadol
- 6 Hydromorphone
- 7 Morphine
- 8 Codeine
- 9 Hydrocodone
- 10 Oxymorphone
- 11 Methadone
- 12 Oxycodone
- 13 6-MAM
- 14 Norbuprenorphine
- 15 Buprenorphine

