

## Antihistamines using Kinetex 5u EVO C18 150x4.6mm

**Column:** Kinetex® 5µm EVO C18 100 Å, LC Column 150 x 4.6 mm, Ea

**Dimensions:** 150 x 4.6 mm ID

**Order No:** 00F-4633-E0

**Elution Type:** Gradient

**Eluent A:** 20mM Sodium phosphate pH 7

**Eluent B:** Methanol

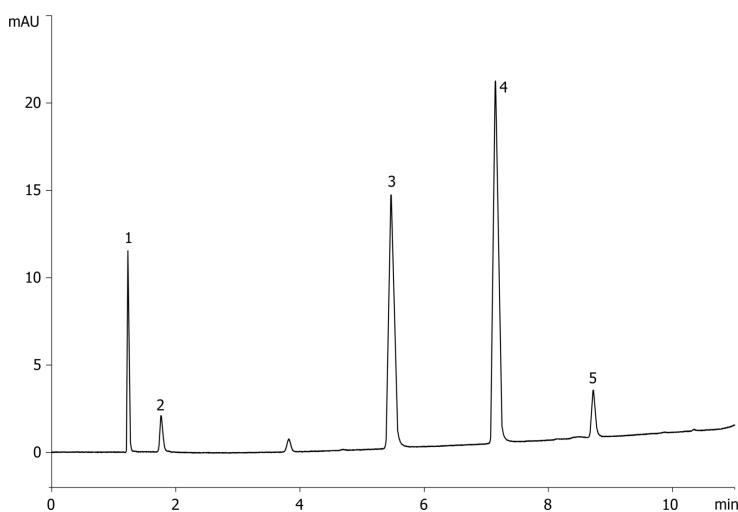
Gradient Profile:	Step No.	Time (min)	Pct A	Pct B
	1	0	60	40
	2	10	10	90
	3	10.1	60	40
	4	15	60	40

**Flow Rate:** 1 mL/min

**Col. Temp.:** ambient

**Detection:** UV-Vis Abs.-Variable Wave.(UV) @ 254 nm (ambient)

22716



### ANALYTES:

**1 Malate**

Retention Time: 1.23 min

**2 Pseudoephedrine**

Retention Time: 1.765 min

**3 Scopolamine**

Retention Time: 3.819 min

**4 Doxylamine**

Retention Time: 5.466 min

**5 Chlorpheniramine**

Retention Time: 7.147 min

**6 Diphenhydramine**

Retention Time: 8.723 min



Products used in this application:

