

# HPLC Application

ID No.: 22730

## Phospholipid Removal Novum EtoAc Elution(Zoomed)

**Column:** Kinetex<sup>®</sup> 2.6 μm C18 100 Å, LC Column 50 x 2.1 mm, Ea

**Dimensions:** 50 x 2.1 mm ID

**Order No:** 00B-4462-AN

**Elution Type:** Gradient

**Eluent A:** 0.1% Formic Acid in Water

**Eluent B:** 0.1% Formic Acid in Methanol

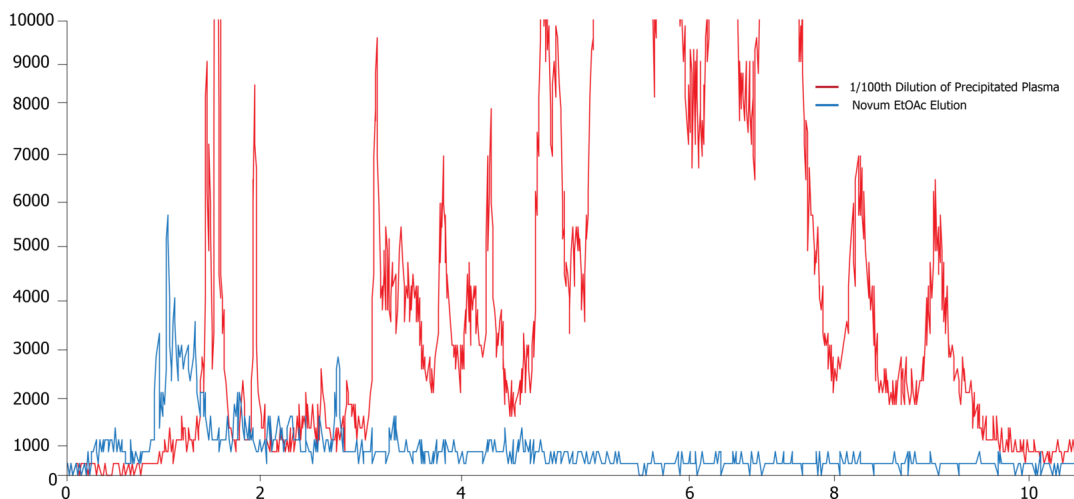
Gradient Profile:	Step No.	Time (min)	Pct A	Pct B
	1	0	40	60
	2	0.5	5	95
	3	15.5	5	95
	4	15.51	40	60
	5	19.5	40	60

**Flow Rate:** 400 μL/min

**Col. Temp.:** ambient

**Detection:** Mass Spectrometer (MS) @ 184 amu (425 °C)

**Analyst Note:** 22730  
Extracted sample was prepped with Phenomenex Novum SLE Plate (400 uL sample Load) Step 1: 400 uL Dilute Plasma (50/50) to the plate. Step 2: Elute with 1800 uL of EtOAc (two steps, 900 uL each)



Products used in this application:



### ANALYTES:

- 1 Phospholipid Profile

