

# HPLC Application

ID No.: 22731

## Customer high pH study using Kinetex 5u EVO C18 150x4.6mm

**Column:** Kinetex<sup>®</sup> 5 $\mu$ m EVO C18 100 Å, LC Column 150 x 4.6 mm, Ea

**Dimensions:** 150 x 4.6 mm ID

**Order No:** 00F-4633-E0

**Elution Type:** Gradient

**Eluent A:** 0.1% Ethanolamine (pH ~10.5)

**Eluent B:** Acetonitrile with 0.1% Ethanolamine

<b>Gradient Profile:</b>	<b>Step No.</b>	<b>Time (min)</b>	<b>Pct A</b>	<b>Pct B</b>
	<b>1</b>	0	90	10
	<b>2</b>	5	10	90

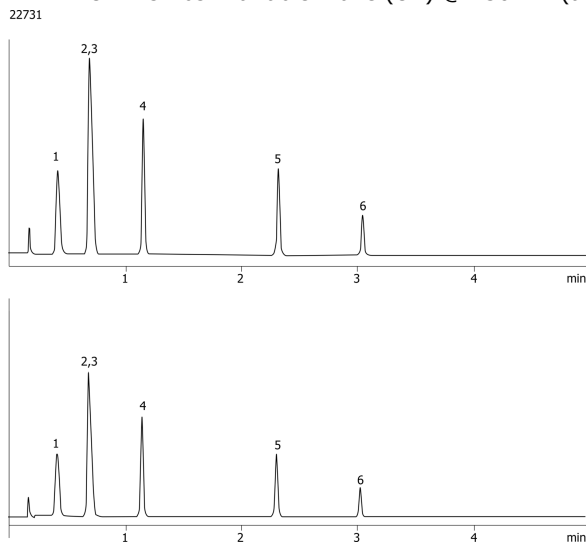
**Flow Rate:** 1.5 mL/min

**Col. Temp.:** 40 °C

**Detection:** UV-Vis Abs.-Variable Wave.(UV) @ 230 nm (ambient)



Products used in this application:



### ANALYTES:

- 1 Pyridine
- 2 Aniline
- 3 Proprietary peak
- 4 Benzyl alcohol
- 5 Toluene
- 6 Proprietary peak

