

Batch reproducibility of Kinetex 5u EVO C18 150x4.6mm

Column: Kinetex® 5µm EVO C18 100 Å, LC Column 150 x 4.6 mm, Ea

Dimensions: 150 x 4.6 mm ID

Order No: 00F-4633-E0

Elution Type: Gradient

Eluent A: Water with 0.1% Formic acid

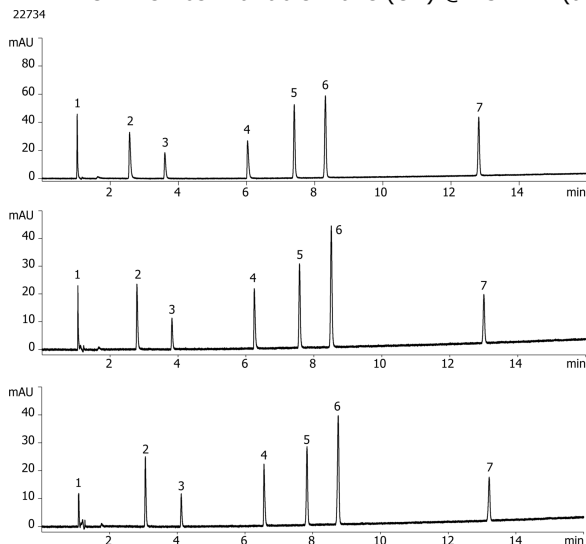
Eluent B: Acetonitrile with 0.1% formica cid

Gradient Profile:	Step No.	Time (min)	Pct A	Pct B
	1	0	95	5
	2	17.76	5	95

Flow Rate: 1.25 mL/min

Col. Temp.: 30 °C

Detection: UV-Vis Abs.-Variable Wave.(UV) @ 254 nm (ambient)



ANALYTES:

- 1 Uracil
- 2 Pindolol
- 3 Chlorpheniramine
- 4 Nortriptyline
- 5 3-methyl,4-nitrobenzoic acid
- 6 2-hydroxy,5-methylbenzaldehyde
- 7 Hexanophenone



Products used in this application:

