

HPLC Application

ID No.: 22743

Prep sample using Kinetex 5u EVO C18 AXIA 150x21.2mm

Column: Kinetex® 5µm EVO C18 100 Å, AXIA Packed LC Column 150 x 21.2 mm, Ea

Dimensions: 150 x 21.2 mm ID

Order No: 00F-4633-P0-AX

Elution Type: Gradient

Eluent A: Water with 0.1% TFA

Eluent B: Acetonitrile with 0.1% TFA

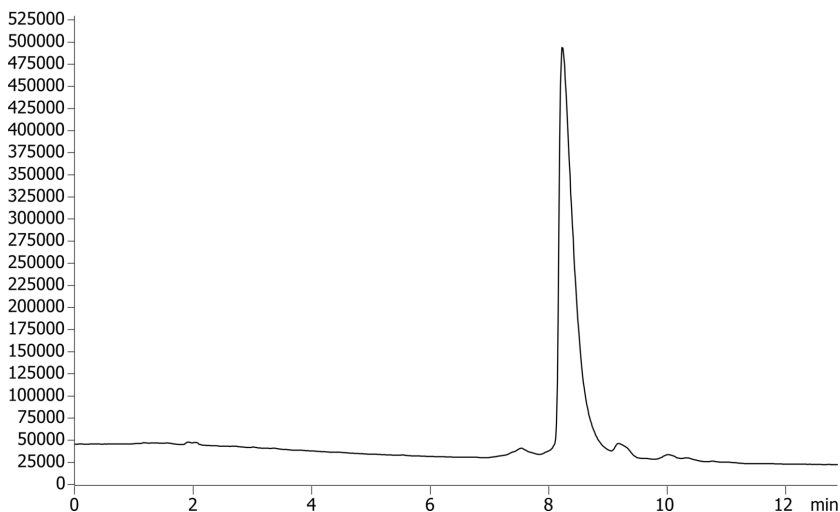
Gradient Profile:	Step No.	Time (min)	Pct A	Pct B
	1	0	80	20
	2	10	30	70

Flow Rate: 30 mL/min

Col. Temp.: 25 °C

Detection: UV-Vis Abs.-Variable Wave.(UV) @ 230 nm (ambient)

22743



ANALYTES:

- 1 Proprietary sample



Products used in this application:

