

HPLC Application

ID No.: 22748

Aeris Ig-G comparison widepore: All phases overlay C4, C8, C18

Column: Aeris™ 3.6 µm WIDEPORE C4 200 Å, LC Column 150 x 4.6 mm, Ea

Dimensions: 150 x 4.6 mm ID

Order No: 00F-4486-E0

Elution Type: Gradient

Eluent A: 0.1% TFA

Eluent B: 0.085% TFA in AcCN

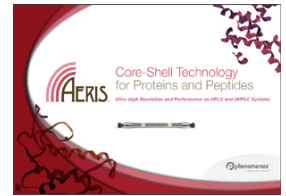
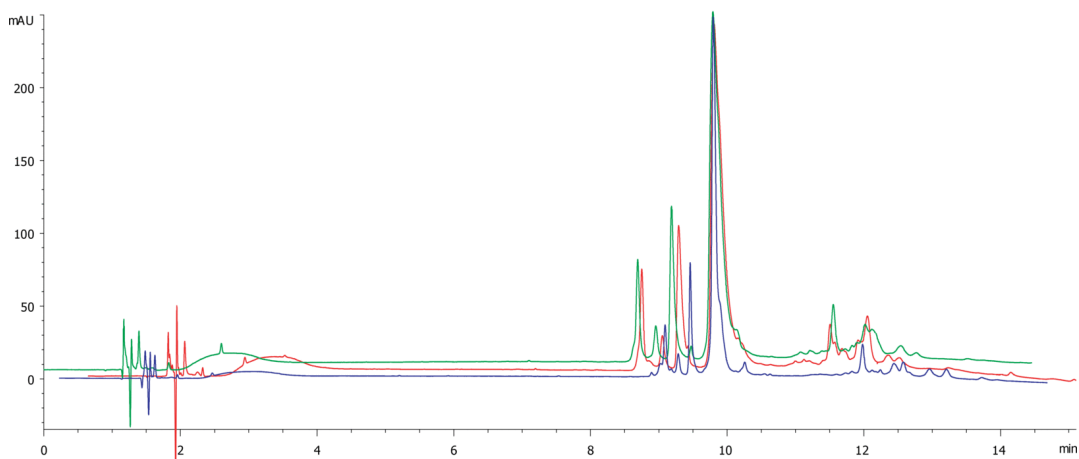
Gradient Profile:	Step No.	Time (min)	Pct A	Pct B
	1	0	90	10
	2	1	80	20
	3	15	40	60
	4	15.01	90	10

Flow Rate: 1

Col. Temp.: 40 °C

Detection: UV-Vis Abs.-Variable Wave.(UV) @ 214 nm (ambient)

22748



Products used in this application:



ANALYTES:

- 1 Ig-G1 Standard

