

HPLC Application

ID No.: 22768

Loading Study using Kinetex 5u EVO C18 AXIA Packed 150x21.2mm

Column: Kinetex[®] 5 μ m EVO C18 100 Å, AXIA Packed LC Column 150 x 21.2 mm, Ea

Dimensions: 150 x 21.2 mm ID

Order No: 00F-4633-P0-AX

Elution Type: Gradient

Eluent A: Water with 0.1% TFA

Eluent B: Acetonitrile with 0.1% TFA

Gradient Profile:	Step No.	Time (min)	Pct A	Pct B
	1	0	95	5
	2	5	5	95

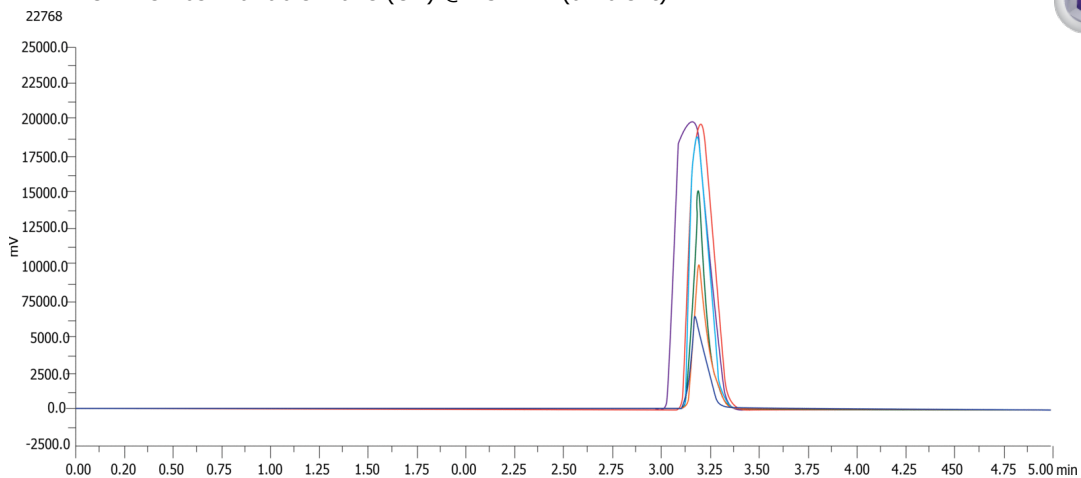
Flow Rate: 25 mL/min

Col. Temp.: ambient

Detection: UV-Vis Abs.-Variable Wave.(UV) @ 254 nm (ambient)



Products used in this application:



ANALYTES:

- 1 Amitriptyline

