

## Oxytocin Extracted Ion Chromatograms, QCL (0.500 ng/mL)

**Column:** Luna® 3 µm PFP(2) 100 Å, LC Column 50 x 2 mm, Ea

**Dimensions:** 50 x 2 mm ID

**Order No:** 00B-4447-B0

**Elution Type:** Gradient

**Eluent A:** 0.1%FA in water

**Eluent B:** 0.1%FA in 50:50 MeOH:Acetonitrile

Gradient Profile:	Step No.	Time (min)	Pct A	Pct B
	1	0	90	10
	2	0.2	90	10
	3	0.5	70	30
	4	3.5	70	30
	5	3.51	30	70
	6	4	30	70
	7	4.01	90	10
	8	5	90	10

**Flow Rate:** 0.45 mL/min

**Col. Temp.:** ambient

**Detection:** Tandem Mass Spec (MS-MS) @ (40 °C)

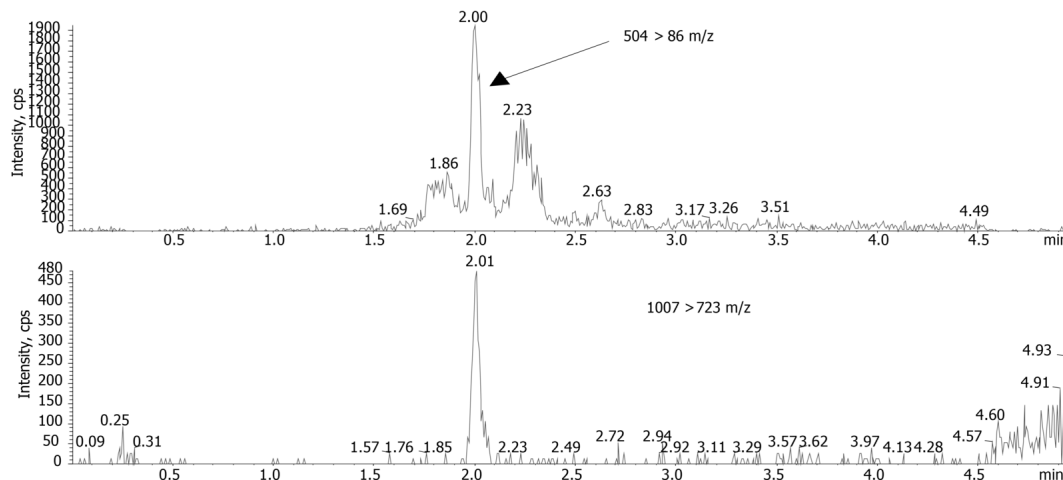
**Detector Info:**

22771

<a target="\_blank" href="https://sciex.com/products/mass-spectrometers?utm\_campaign=2019%20application%20search&utm\_source=phenomenex&utm\_medium=referral">SCIEX</a>



Products used in this application:



### ANALYTES:

- 1** Oxytocin  
Retention Time: 2.02 min
- 2** ARG-Vasopressin  
Retention Time: 1.72 min



# Sample Preparation Details

for HPLC Application ID No.: 22771

## Oxytocin Extracted Ion Chromatograms, QCL (0.500 ng/mL)

### PRODUCT DESCRIPTION:

Strata™-X-CW 33 µm Polymeric Weak Cation, 30 mg / well, 96-Well Plates , 2/Pk

Order No.: 8E-S035-TGB

### SOLID PHASE EXTRACTION (SPE) PROCEDURE:

**Note:** The solvent volumes shown below are for a 30 mg bed mass.

The solvent volumes will need to be adjusted for a smaller or larger bed mass.

#### Condition:

---

#### Load:

---

#### Wash:

---

#### Dry:

---

3-5 min

#### Elute:

---

#### Final Prep and Analysis:

---

Inject: 10 µL on HPLC Tandem Mass Spec (MS-MS) @ (40°C)

ANALYTES:	Spiked Conc. (ng/mL)	Log P	pKa	% Rec	%RSC (n=0)
1 Oxytocin	0				
2 ARG-Vasopressin	0				

**Note:** This method is designed as a convenient starting point for further investigation and can be tailored to meet your extraction goals. Call your local Phenomenex Representative for assistance in method development and optimization techniques.

©2024 Phenomenex Inc. All rights reserved.

For more information contact your Phenomenex Representative at support@phenomenex.com



Phenomenex products are available worldwide.

[www.phenomenex.com](http://www.phenomenex.com)

[support@phenomenex.com](mailto:support@phenomenex.com)