

HPLC Application

ID No.: 22779

TCAs at neutral pH Kinetex 5u EVO C18 150x4.6mm

Column: Kinetex® 5µm EVO C18 100 Å, LC Column 150 x 4.6 mm, Ea

Dimensions: 150 x 4.6 mm ID

Order No: 00F-4633-E0

Elution Type: Isocratic

Eluent A: 20mM Sodium phosphate pH 7

Eluent B: Acetonitrile/Methanol 50/50

Gradient Profile:	Step No.	Time (min)	Pct A	Pct B
	1	0	30	70

Flow Rate: 1.25 mL/min

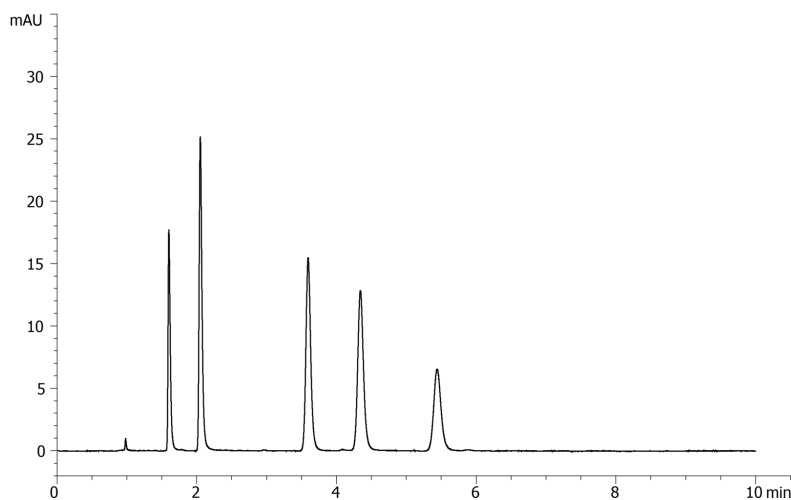
Col. Temp.: 30 °C

Detection: UV-Vis Abs.-Variable Wave.(UV) @ 254 nm (ambient)

22779



Products used in this application:



ANALYTES:

- 1 Protriptyline
- 2 Nortriptyline
- 3 Imipramine
- 4 Amitriptyline
- 5 Clomipramine

