

Typical Chromatogram of 6 Cannabinoids

Column: Kinetex® 2.6 µm XB-C18 100 Å, LC Column 150 x 3 mm, Ea

Dimensions: 150 x 3 mm ID

Order No: 00F-4496-Y0

Elution Type: Gradient

Eluent A: 5 mM Phosphate Buffer, pH 2.5

Eluent B: Acetonitrile

Gradient Profile:	Step No.	Time (min)	Pct A	Pct B
	1	0	25	75
	2	3	5	95
	3	6	5	95

Flow Rate: 0.5 mL/min

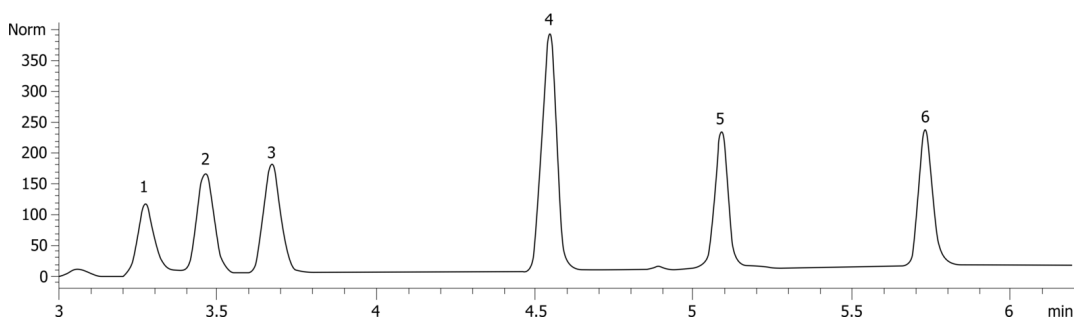
Col. Temp.: ambient

Detection: UV-Vis Abs.-Variable Wave.(UV) @ (40 °C)

Detector Info: 222
22791



Products used in this application:



ANALYTES:

- 1** Cannabidiolic Acid (CBD-A)
Retention Time: 3.274 min
- 2** Cannabigerol (CBG)
Retention Time: 2.458 min
- 3** Cannabidiol (CBD)
Retention Time: 3.67 min
- 4** Cannabinol (CBN)
Retention Time: 4.544 min
- 5** Tetrahydrocannabinol (THC)
Retention Time: 5.088 min
- 6** Tetrahydrocannabinol acetate (THC-A)
Retention Time: 5.731 min

