

Catechins and Phenolic acids on a Kinetex 2.6 μm F5 100 x 2.1

Column: Kinetex® F5 2.6μm 100 Å, LC Column 100 x 2.1 mm, Ea

Dimensions: 100 x 2.1 mm ID

Order No: 00D-4723-AN

Elution Type: Gradient

Eluent A: 0.1% TFA in Water

Eluent B: Acetonitrile

Gradient Profile:	Step No.	Time (min)	Pct A	Pct B
	1	0	90	10
	2	5	20	80
	3	6	20	80

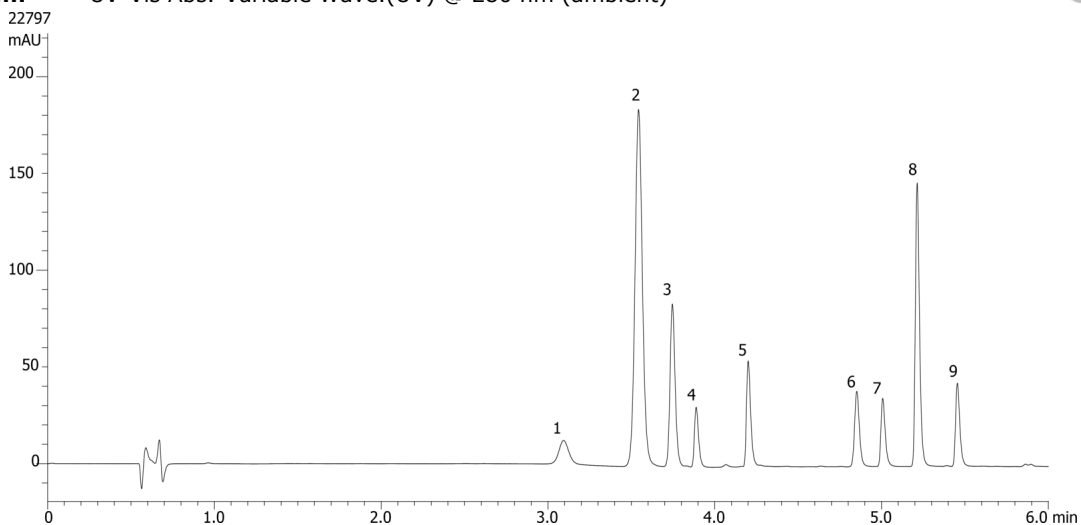
Flow Rate: 0.4 mL/min

Col. Temp.: ambient

Detection: UV-Vis Abs.-Variable Wave.(UV) @ 280 nm (ambient)



Products used in this application:



ANALYTES:

- 1 Catechin
- 2 p-Hydroxybenzaldehyde
- 3 Syringic acid
- 4 Epicatechin
- 5 Gallic acid
- 6 o-Vanillin
- 7 Myricetin
- 8 Resveratrol
- 9 Quercetin

