

HPLC Application

ID No.: 22799

Substituted Phenol Isomers on a Kinetex 2.6 μm F5 150 x 4.6

Column: Kinetex[®] F5 2.6μm 100 Å, LC Column 150 x 4.6 mm, Ea

Dimensions: 150 x 4.6 mm ID

Order No: 00F-4723-E0

Elution Type: Isocratic

Eluent A: 0.1% TFA in Water

Eluent B: Acetonitrile

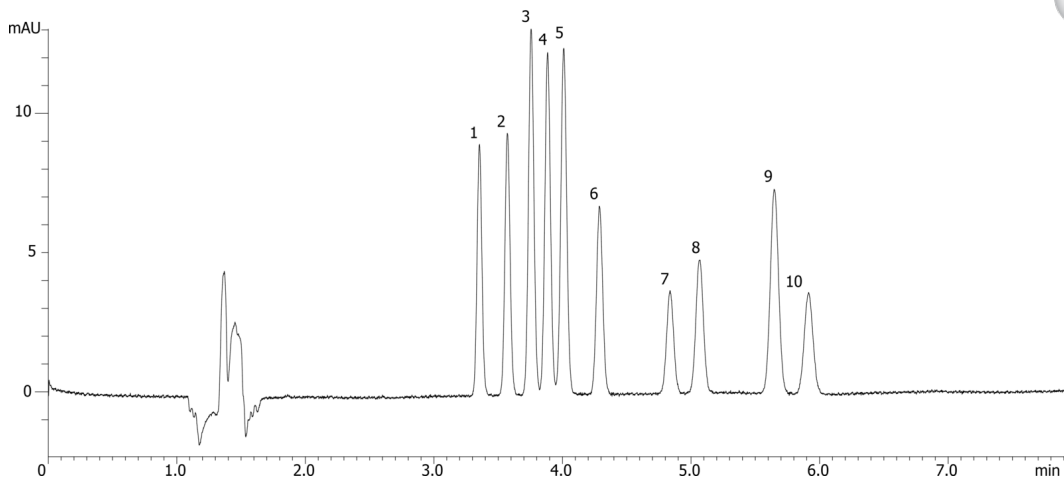
Gradient Profile:	Step No.	Time (min)	Pct A	Pct B
	1	0	55	45

Flow Rate: 1 mL/min

Col. Temp.: ambient

Detection: UV-Vis Abs.-Variable Wave.(UV) @ 254 nm (ambient)

22799



Products used in this application:



Substituted Phenol Isomers on a Kinetex 2.6 μm F5 150 x 4.6

ANALYTES:

- 1** 3,4-Dimethylphenol
- 2** 3,5-Dimethylphenol
- 3** 2,3-Dimethylphenol
- 4** 2,5-Dimethylphenol
- 5** 2,6-Dimethylphenol
- 6** 2,6-Dichlorophenol
- 7** 2,5-Dichlorophenol
- 8** 3,4-Dichlorophenol
- 9** 2,4-Dibromophenol
- 10** 3,5-Dichlorophenol

