

Aqueous Stability Kinetex 2.6u F5 100x4.6mm (Organic Acids)

Column: Kinetex® F5 2.6µm 100 Å, LC Column 100 x 4.6 mm, Ea

Dimensions: 100 x 4.6 mm ID

Order No: 00D-4723-E0

Elution Type: Isocratic

Eluent A: 20mM Potassium Phosphate pH 2.9

Gradient Profile:	Step No.	Time (min)	Pct A
	1	0	100

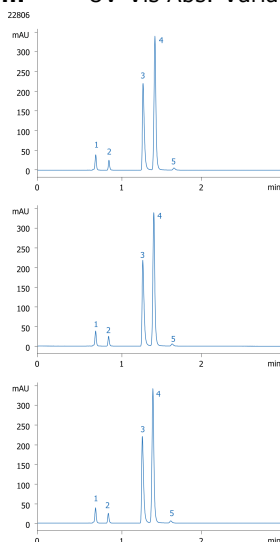
Flow Rate: 1.5 mL/min

Col. Temp.: ambient

Detection: UV-Vis Abs.-Variable Wave.(UV) @ 210 nm (ambient)



Products used in this application:



ANALYTES:

- 1 Tartaric Acid
- 2 Malic Acid
- 3 Maleic Acid
- 4 Fumaric Acid
- 5 Succinic Acid

