

HPLC Application

ID No.: 22810

LCMS of Vitamin D epimers on Kinetex 2.6u F5 100x4.6mm

Column: Kinetex® F5 2.6µm 100 Å, LC Column 100 x 4.6 mm, Ea

Dimensions: 100 x 4.6 mm ID

Order No: 00D-4723-E0

Elution Type: Isocratic

Eluent A: Water with 0.1% formic acid

Eluent B: Methanol with 0.1% formic acid

Gradient Profile:	Step No.	Time (min)	Pct A	Pct B
	1	0	15	85

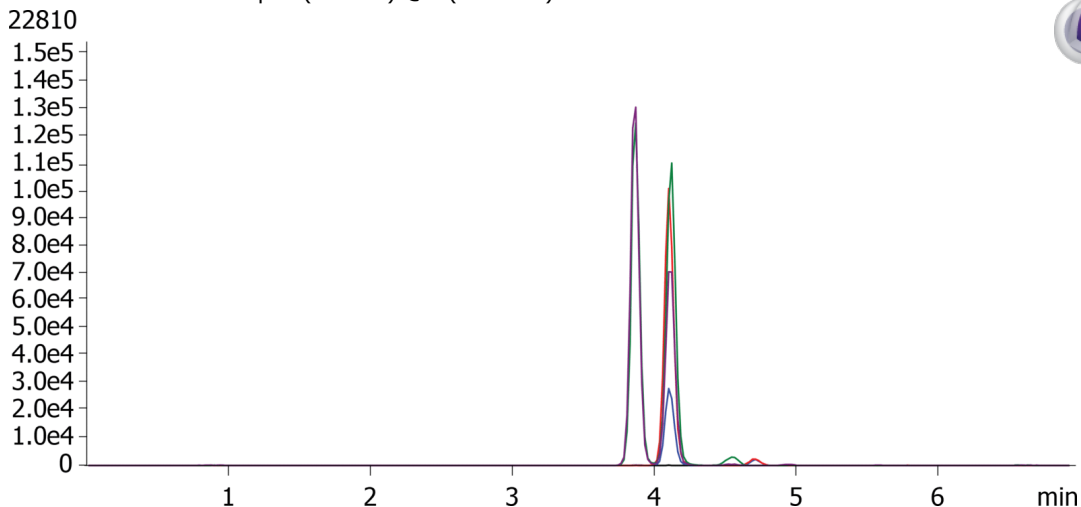
Flow Rate: 0.75 mL/min

Col. Temp.: ambient

Detection: Tandem Mass Spec (MS-MS) @ (ambient)



Products used in this application:



ANALYTES:

- 1 25-OH Vitamin D3
- 2 25-OH Vitamin D2
- 3 3-epi-25-OH Vitamin D3

