

HPLC Application

ID No.: 22813

Pharmaceutical Mix on Kinetex 1.7 F5 50x2.1mm

Column: Kinetex[®] F5 1.7 μ m 100 Å, LC Column 50 x 2.1 mm, Ea

Dimensions: 50 x 2.1 mm ID

Order No: 00B-4722-AN

Elution Type: Gradient

Eluent A: 10mM Ammonium Acetate pH 3.2

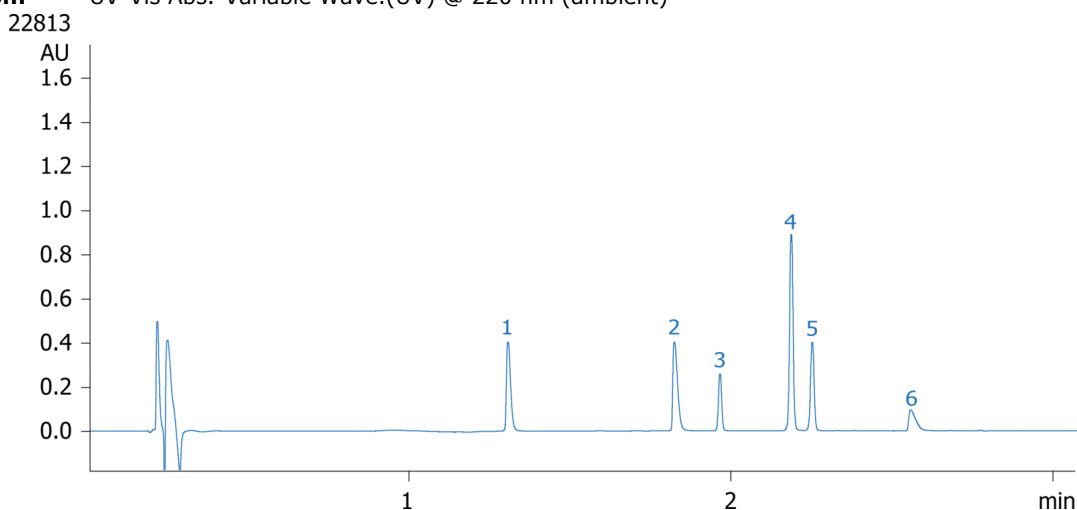
Eluent B: Acetonitrile

Gradient Profile:	Step No.	Time (min)	Pct A	Pct B
	1	0	90	10
	2	0.6	90	10
	3	3.5	5	95
	4	4.5	5	95
	5	5	90	10
	6	7	90	10

Flow Rate: 0.4 mL/min

Col. Temp.: ambient

Detection: UV-Vis Abs.-Variable Wave.(UV) @ 220 nm (ambient)



ANALYTES:

- 1** Pindolol
Retention Time: 1.285 min
- 2** Propanolol
Retention Time: 1.781 min
- 3** Indoprofen
Retention Time: 1.917 min
- 4** Naproxen
Retention Time: 2.129 min
- 5** Warfarin
Retention Time: 2.192 min
- 6** Terfenidine
Retention Time: 2.485 min



Products used in this application:

