

# HPLC Application

ID No.: 22816

## Antibiotics Screen Kinetex 2.6u F5 50x2.1mm

**Column:** Kinetex<sup>®</sup> F5 2.6 $\mu$ m 100 Å, LC Column 50 x 2.1 mm, Ea

**Dimensions:** 50 x 2.1 mm ID

**Order No:** 00B-4723-AN

**Elution Type:** Gradient

**Eluent A:** 0.1% FA in Water

**Eluent B:** 0.1%FA in MeOH

Gradient Profile:	Step No.	Time (min)	Pct A	Pct B
	1	0	100	0
	2	0.08	100	0
	3	1.08	0	100
	4	8.08	0	100
	5	11.08	100	0
	6	11.58	100	0

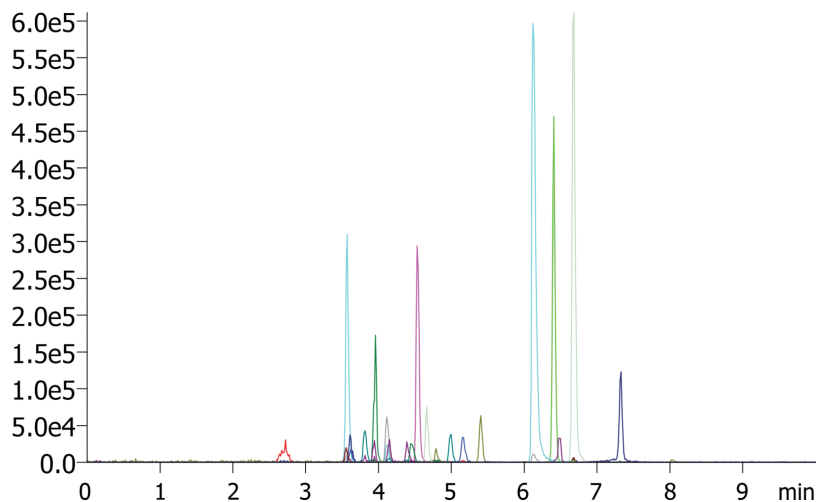
**Flow Rate:** 0.5 mL/min

**Col. Temp.:** ambient

**Detection:** Tandem Mass Spec (MS-MS) @ (ambient)

**Detector Info:**

22816



Products used in this application:



## Antibiotics Screen Kinetex 2.6u F5 50x2.1mm

### ANALYTES:

- 1 AMOXICILLIN
- 2 SULFADIAZINE
- 3 LINCOMYCIN
- 4 CEFAPIRIN
- 5 SULFAPYRIDINE
- 6 SULFATHIAZOLE
- 7 SULFAMERAZINE
- 8 NEOSPIRAMYCIN (M+2)
- 9 CEFALEXIN
- 10 SULFAMETHAZINE
- 11 MARBOFLOXACIN
- 12 CEFAZOLIN
- 13 SULFAMETHOXAZOLE
- 14 CIPROFLOXACIN
- 15 CEFOPERAZONE
- 16 DIFLOXACIN
- 17 SULFAQUINOXALINE
- 18 DOXYCYCLINE
- 19 TIAMULIN
- 20 CLOXACILLIN
- 21 Nafcillin
- 22 DICLOXACILLIN
- 23 VALNEMULIN
- 24 RIFAXIMIN

