

HPLC Application

ID No.: 22817

Food Additives on a Kinetex 2.6u F5 150 x 2.1mm

Column: Kinetex[®] F5 2.6 μ m 100 Å, LC Column 150 x 2.1 mm, Ea

Dimensions: 150 x 2.1 mm ID

Order No: 00F-4723-AN

Elution Type: Gradient

Eluent A: 0.1% Phosphoric Acid in Water

Eluent B: Acetonitrile

Gradient Profile:	Step No.	Time (min)	Pct A	Pct B
	1	0	5	95
	2	6	35	65

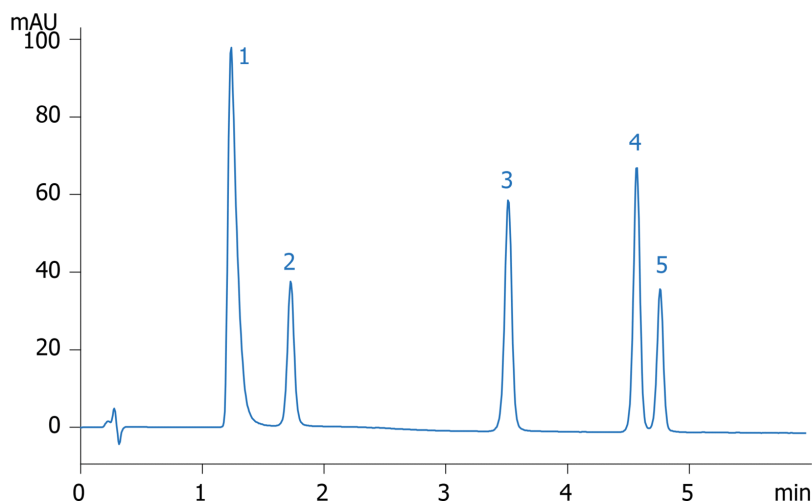
Flow Rate: 0.6 mL/min

Col. Temp.: 30 °C

Detection: UV-Vis Abs.-Variable Wave.(UV) @ (ambient)
22817



Products used in this application:



ANALYTES:

- 1** Saccharin
Retention Time: 1.236 min
- 2** p-Hydroxybenzoic acid
Retention Time: 1.726 min
- 3** Sorbic acid
Retention Time: 3.513 min
- 4** Dehydroacetic acid
Retention Time: 4.567 min
- 5** Methyl paraben
Retention Time: 4.76 min

