

GC Application

ID No.: 22826

Terpenes in Marijuana by GC/FID on ZB-35HT

Column: Zebtron[™] ZB-35HT, GC Cap. Column 30 m x 0.25 mm x 0.25 μ m, Ea

Phase: 35% Phenyl 65% Dimethylpolysiloxane

Dimensions: 30 meters x 0.25 mm x 0.25 μ m

Order No: 7HG-G025-11

Oven Profile: 80°C for 1 min, 15°/min to 120°, 25°/min to 325°C, hold 2.1 min

Carrier Gas: Constant Flow Helium, 2.5 mL/min

Injection: Split 30:1 2 μ L @ 260°C

Detection: Flame Ionization (FID) (325°C)

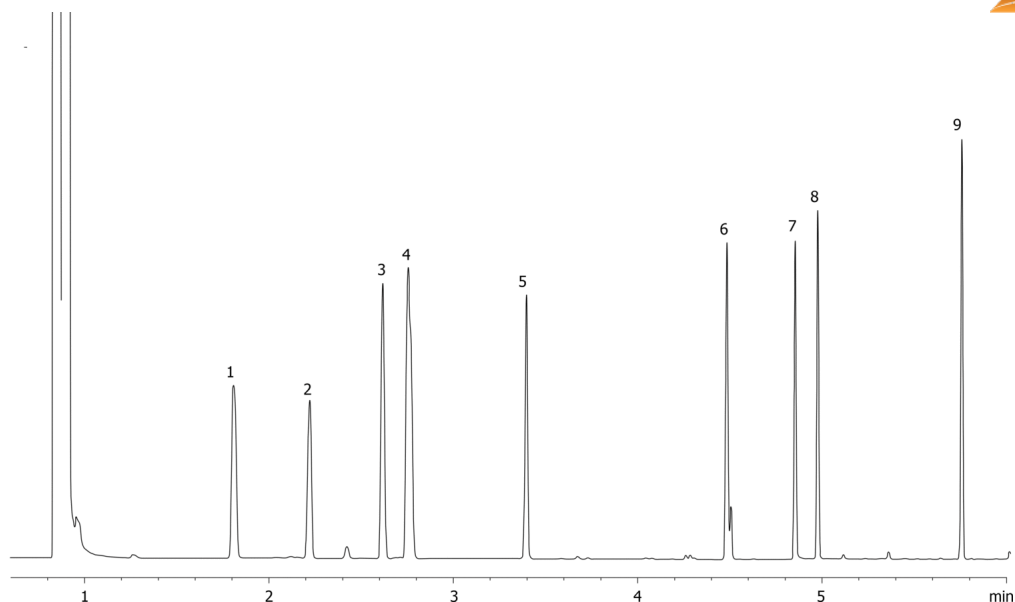
Analyst Note: FID Gases
H₂ Flow 30 mL/min
Air Flow 300 mL/min
Makeup Flow 25 mL/min



Products used in this application:



22826



Terpenes in Marijuana by GC/FID on ZB-35HT

ANALYTES:

- 1 Pinene
- 2 Myrcene
- 3 Limonene
- 4 Eucalyptol/Cymene
- 5 Linalool
- 6 Terpeneol
- 7 Geraniol
- 8 Pulegone
- 9 Caryophyllene
- 10 pulegon
- 11 Terp 1-1
- 12 Terp 2-1
- 13 caryophyllene
- 14 humulene
- 15 Terp 4-2
- 16 Terp 5-2
- 17 Terp 6-2
- 18 Terp 7-2

