

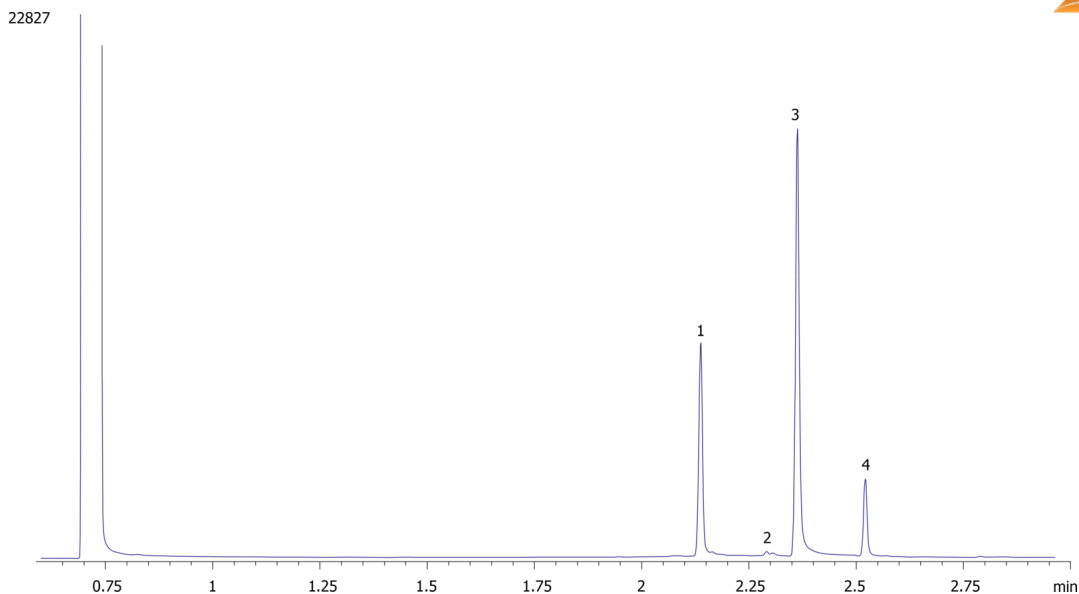
Fast Cannabinoids in Marijuana by GC/FID on ZB-35HT

Column: Zebtron™ ZB-35HT, GC Cap. Column 30 m x 0.25 mm x 0.25 μm, Ea
Phase: 35% Phenyl 65% Dimethylpolysiloxane
Dimensions: 30 meters x 0.25 mm x 0.25 μm
Order No: 7HG-G025-11
Oven Profile: 240°C for 0.1 min, 35°/min to 300°, 100°min to 325°C, hold 0.9 min

Carrier Gas: Constant Flow Helium, 2.5 mL/min
Injection: Split 30:1 2 μL @ 260°C
Detection: Flame Ionization (FID) (325°C)
Analyst Note: FID Gases
H2 Flow 30 mL/min
Air Flow 300 mL/min
Makeup Flow 25 mL/min



Products used in this application:



ANALYTES:

- 1 CBD
- 2 THC-d8
- 3 THC-d9
- 4 CBN

