

HPLC Application

ID No.: 22832

Hypericin and Pseudohypericin Standard

Column: Luna® 5 µm C18(2) 100 Å, LC Column 150 x 4.6 mm, Ea

Dimensions: 150 x 4.6 mm ID

Order No: 00F-4252-E0

Elution Type: Isocratic

Eluent A: Acetonitrile

Eluent B: Methanol

Eluent C: 0.1 M Ammonium Acetate

Gradient Profile:	Step No.	Time (min)	Pct A	Pct B	Pct C
1	1	20	50	30	20

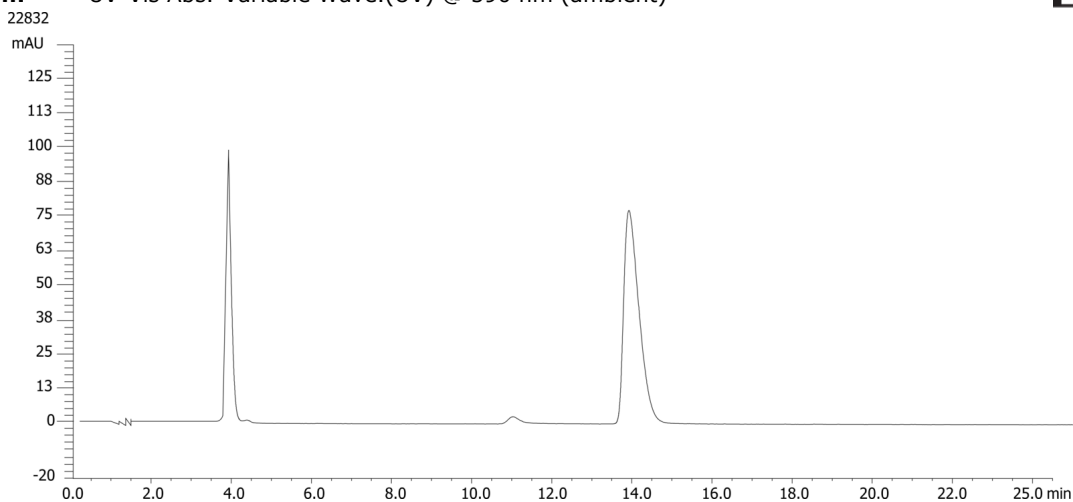
Flow Rate: 1.5 mL/min

Col. Temp.: 21 °C

Detection: UV-Vis Abs.-Variable Wave.(UV) @ 590 nm (ambient)



Products used in this application:



ANALYTES:

- 1** Pseudohypericin
Retention Time: 3.9 min
- 2** Hypericin
Retention Time: 13.9 min

