

Antihistamines on Kinetex 2.6u F5 50x4.6mm at pH 2.9 and pH 7.2

Column: Kinetex® F5 2.6µm 100 Å, LC Column 50 x 4.6 mm, Ea

Dimensions: 50 x 4.6 mm ID

Order No: 00B-4723-E0

Elution Type: Gradient

Eluent A: 20mM Potassium Phosphate pH 2.9

Eluent B: Methanol

| Gradient Profile: | Step No. | Time (min) | Pct A | Pct B |
|-------------------|----------|------------|-------|-------|
| | 1 | 0 | 70 | 30 |
| | 2 | 5 | 10 | 90 |
| | 3 | 6 | 10 | 90 |
| | 4 | 7 | 70 | 30 |
| | 5 | 10 | 70 | 30 |

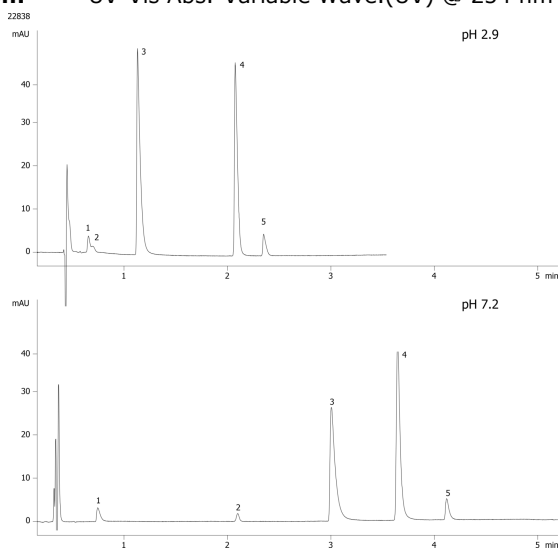
Flow Rate: 1.5 mL/min

Col. Temp.: ambient

Detection: UV-Vis Abs.-Variable Wave.(UV) @ 254 nm (ambient)



Products used in this application:



ANALYTES:

- 1 Pseudoephedrine
- 2 Scopolamine
- 3 Doxylamine
- 4 Chlorpheniramine
- 5 Diphenhydramine