

HPLC Application

ID No.: 22883

25-OH-Vitamin D2 in Human Serum using Novum SLE and Kinetex 2.6µm F5 100 x 4.6mm

Column: Kinetex® F5 2.6µm 100 Å, LC Column 100 x 4.6 mm, Ea

Dimensions: 100 x 4.6 mm ID

Order No: 00D-4723-E0

Elution Type: Gradient

Eluent A: 0.1% FA in Water

Eluent B: 0.1%FA in MeOH

Gradient Profile:	Step No.	Time (min)	Pct A	Pct B
	1	0	15	85
	2	5	15	85
	3	5.01	0	100
	4	6.5	0	100
	5	6.51	15	85
	6	8	15	85

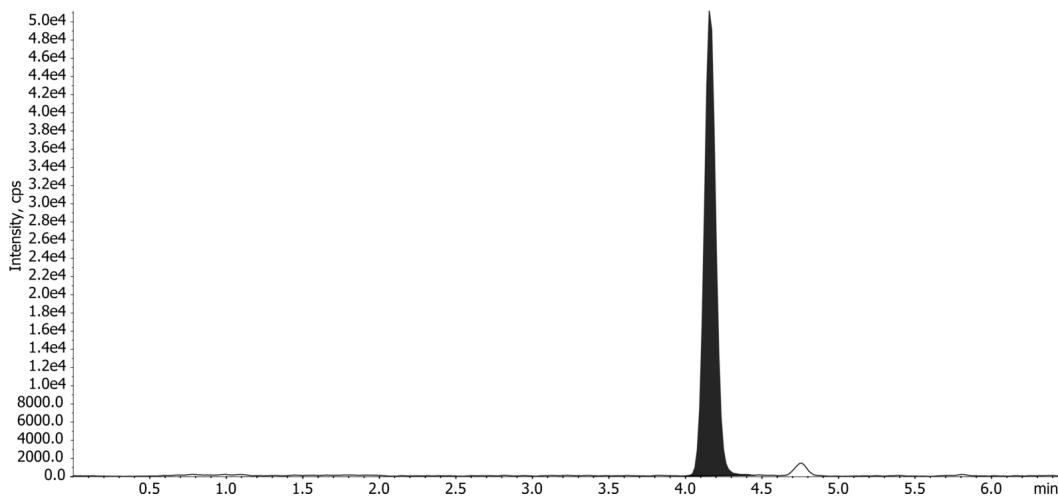
Flow Rate: 0.75 mL/min

Col. Temp.: ambient

Detection: Tandem Mass Spec (MS-MS) @ (ambient)

Detector Info: SCIEX<

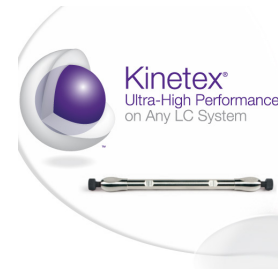
22883



ANALYTES:

1 25-OH-Vitamin D2

Retention Time: 4.16 min



Products used in this application:

