

# HPLC Application

ID No.: 22884

## 25-OH-Vitamin D3 in Human Serum using Novum SLE and Kinetex 2.6um F5 100 x 4.6mm

**Column:** Kinetex® F5 2.6µm 100 Å, LC Column 100 x 4.6 mm, Ea

**Dimensions:** 100 x 4.6 mm ID

**Order No:** 00D-4723-E0

**Elution Type:** Gradient

**Eluent A:** 0.1% FA in Water

**Eluent B:** 0.1%FA in MeOH

Gradient Profile:	Step No.	Time (min)	Pct A	Pct B
	1	0	15	85
	2	5	15	85
	3	5.01	0	100
	4	6.5	0	100
	5	6.51	15	85
	6	8	15	85

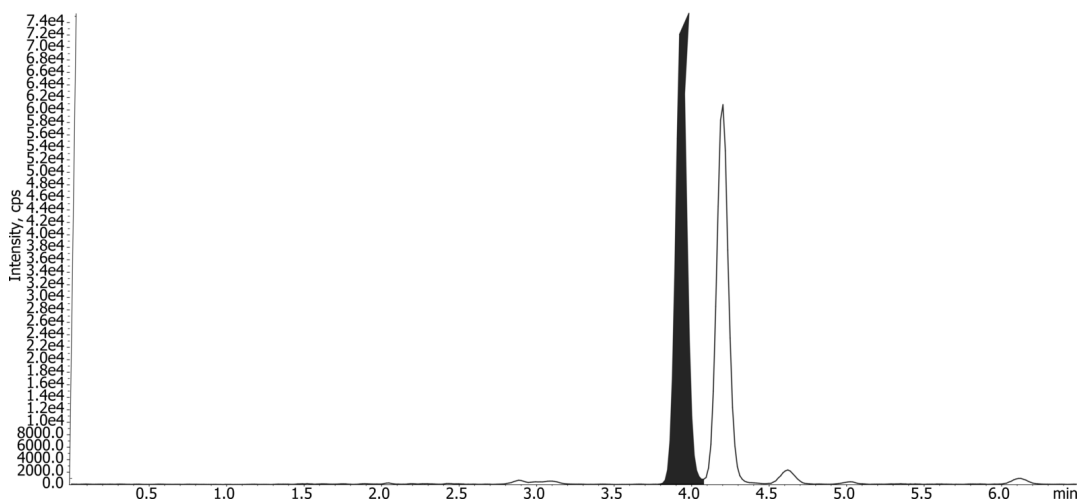
**Flow Rate:** 0.75 mL/min

**Col. Temp.:** ambient

**Detection:** Tandem Mass Spec (MS-MS) @ (ambient)

**Detector Info:** <a target="\_blank" href="https://sciex.com/products/mass-spectrometers?utm\_campaign=2019%20application%20search&utm\_source=phenomenex&utm\_medium=referral">SCIE

22884



### ANALYTES:

1 25-OH-Vitamin-D3

Retention Time: 3.93 min



Products used in this application:

