

Determination of Ginsenosides in Panax and American Ginseng Extracts by HPLC

Column: Luna® 5 µm C18(2) 100 Å, LC Column 150 x 4.6 mm, Ea

Dimensions: 150 x 4.6 mm ID

Order No: 00F-4252-E0

Elution Type: Gradient

Eluent A: Acetonitrile/Water 15:85

Eluent B: Acetonitrile/Water 35:65

Gradient Profile:	Step No.	Time (min)	Pct A	Pct B
	1	0	100	0
	2	0	0	100

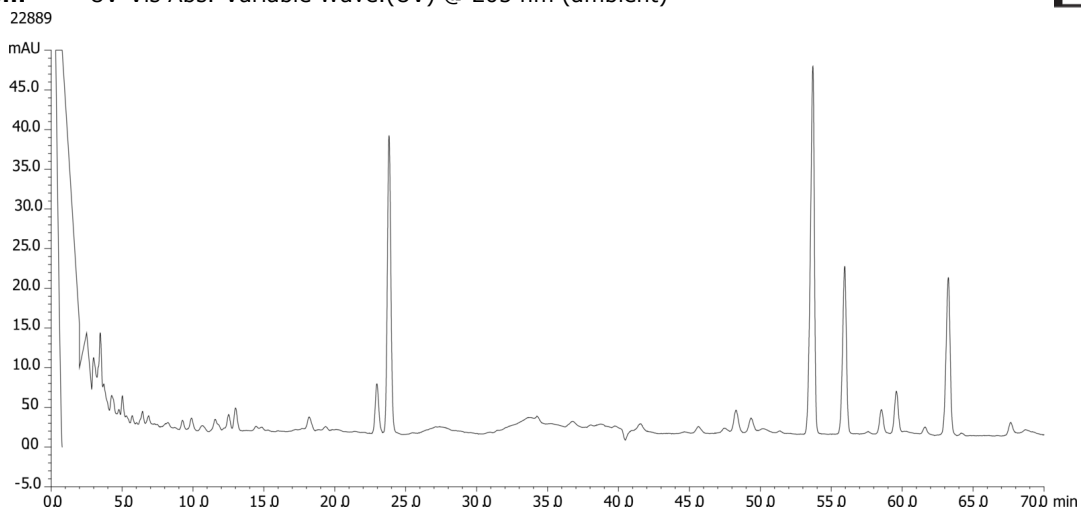
Flow Rate: 1.7 mL/min

Col. Temp.: ambient

Detection: UV-Vis Abs.-Variable Wave.(UV) @ 205 nm (ambient)



Products used in this application:



ANALYTES:

- 1 Ginsenoside Rg1
Retention Time: 24 min
- 2 Ginsenoside Re
Retention Time: 25 min
- 3 Ginsenoside Rf
Retention Time: 43 min
- 4 Ginsenoside Rb1
Retention Time: 55 min
- 5 Ginsenoside Rc
Retention Time: 57 min
- 6 Ginsenoside Rb1
Retention Time: 60 min
- 7 Ginsenoside Rd
Retention Time: 64 min

