

# HPLC Application

ID No.: 22909

## 5-Hydroxytryptophan in Dietary Supplement Capsules by HPLC

**Column:** Luna® 5 µm C18(2) 100 Å, LC Column 150 x 4.6 mm, Ea

**Dimensions:** 150 x 4.6 mm ID

**Order No:** 00F-4252-E0

**Elution Type:** Gradient

**Eluent A:** 95:5:0.2 Water:Methanol:H3PO4 + 10 mM HSA

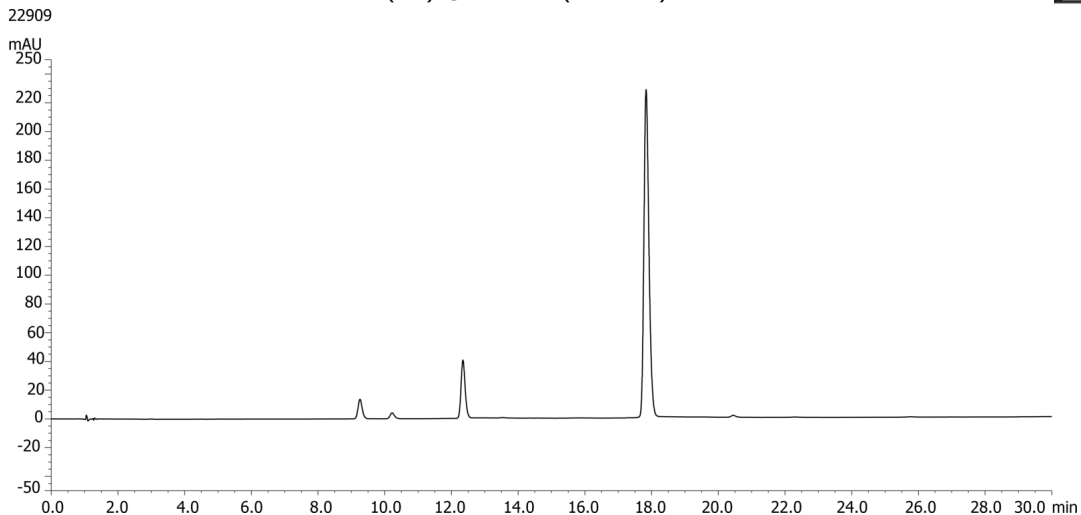
**Eluent B:** 50:50:0.2 Water:Methanol:H3PO4 + 10 mM HSA

Gradient Profile:	Step No.	Time (min)	Pct A	Pct B
	1	0	100	0
	2	30	0	100

**Flow Rate:** 1.5 mL/min

**Col. Temp.:** 25 °C

**Detection:** UV-Vis Abs.-Variable Wave.(UV) @ 280 nm (ambient)



Products used in this application:



### ANALYTES:

1 5-Hydroxytryptophan

Retention Time: 18 min

