

HPLC Application

ID No.: 22910

5-Hydroxytryptophan by HPLC Standard

Column: Luna® 5 µm C18(2) 100 Å, LC Column 150 x 4.6 mm, Ea

Dimensions: 150 x 4.6 mm ID

Order No: 00F-4252-E0

Elution Type: Gradient

Eluent A: 95:5:0.2 Water:Methanol:H3PO4 + 10 mM HSA

Eluent B: 50:50:0.2 Water:Methanol:H3PO4 + 10 mM HSA

Gradient Profile:	Step No.	Time (min)	Pct A	Pct B
	1	0	100	0
	2	30	0	100

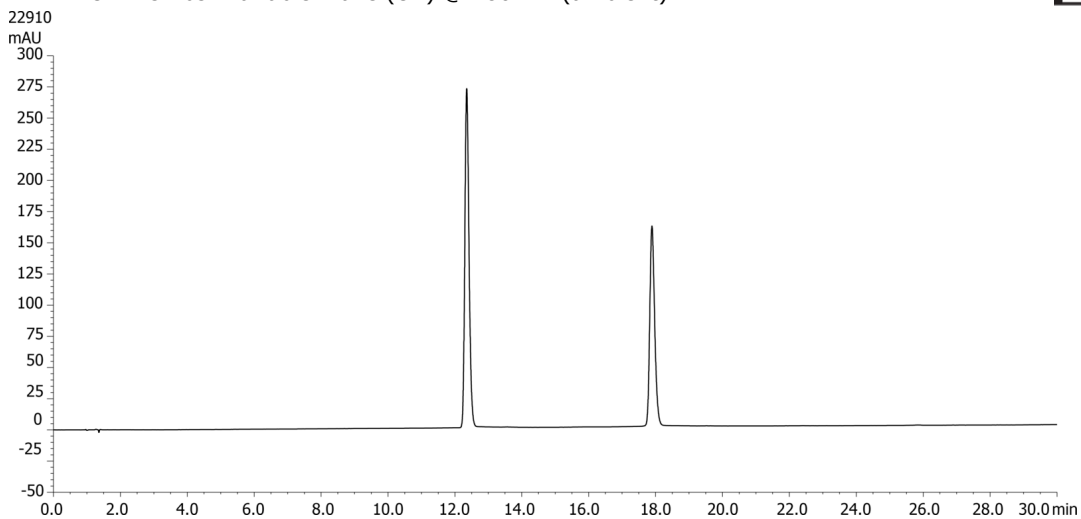
Flow Rate: 1.5 mL/min

Col. Temp.: 25 °C

Detection: UV-Vis Abs.-Variable Wave.(UV) @ 280 nm (ambient)



Products used in this application:



ANALYTES:

1 5-Hydroxytryptophan

Retention Time: 18 min

