

## Pantothenic Acid in Dietary Supplement Capsules by HPLC

**Column:** Synergi™ 4 µm Hydro-RP 80 Å, LC Column 150 x 4.6 mm, Ea

**Dimensions:** 150 x 4.6 mm ID

**Order No:** 00F-4375-E0

**Elution Type:** Isocratic

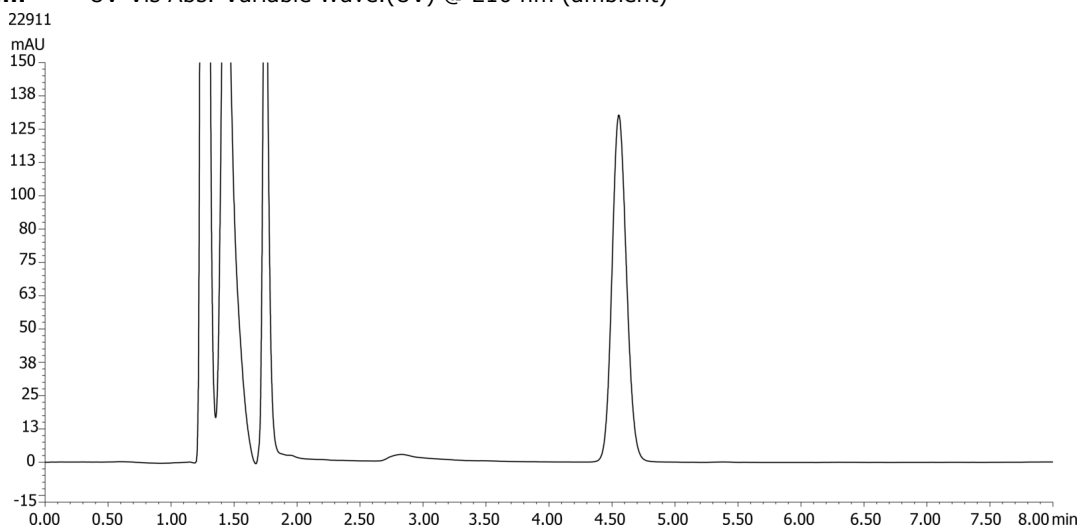
**Eluent A:** Acetonitrile / Water / Phosphoric Acid, 85%□□3:97:0.1

Gradient	Step No.	Time (min)	Pct A
<b>Profile:</b>	<b>1</b>	10	100

**Flow Rate:** 1.5 mL/min

**Col. Temp.:** ambient

**Detection:** UV-Vis Abs.-Variable Wave.(UV) @ 210 nm (ambient)



### ANALYTES:

**1** Pantothenic Acid

Retention Time: 4.5 min

