

HPLC Application

ID No.: 22913

Stevia Standards on Kinetex 1.7u C18 150x2.1mm

Column: Kinetex[®] 1.7 μ m C18 100 Å, LC Column 150 x 2.1 mm, Ea

Dimensions: 150 x 2.1 mm ID

Order No: 00F-4475-AN

Elution Type: Gradient

Eluent A: 0.1% Formic Acid in Water

Eluent B: 0.1% Formic Acid in Acetonitrile

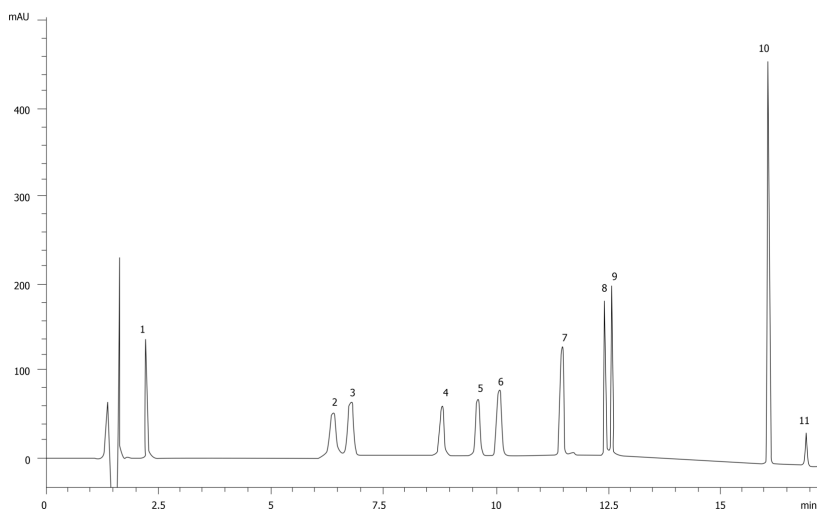
Gradient Profile:	Step No.	Time (min)	Pct A	Pct B
	1	0	72	28
	2	2	72	28
	3	2.01	68	32
	4	5	68	32
	5	12	1	99
	6	16	1	99
	7	17	72	28
	8	25	72	28

Flow Rate: 0.2 mL/min

Col. Temp.: ambient

Detection: UV-Vis Abs.-Variable Wave.(UV) @ 202 nm (ambient)

22913



Products used in this application:



Stevia Standards on Kinetex 1.7u C18 150x2.1mm

ANALYTES:

- 1** Rebaudioside D
- 2** Rebaudioside A
- 3** Stevioside
- 4** Rebaudioside F
- 5** Rebaudioside C
- 6** Dulcoside A
- 7** Rubsoside
- 8** Rebaudioside B
- 9** Steviobioside
- 10** Steviol
- 11** Isosteviol

