

HPLC Application

ID No.: 22938

Basic drug mix on Kinetex 5u C18 150x4.6mm

Column: Kinetex[®] 5 μ m C18 100 Å, LC Column 150 x 4.6 mm, Ea

Dimensions: 150 x 4.6 mm ID

Order No: 00F-4601-E0

Elution Type: Isocratic

Eluent A: 20mM Potassium Phosphate pH 7.0

Eluent B: Methanol

Gradient Profile:	Step No.	Time (min)	Pct A	Pct B
	1	0	60	40

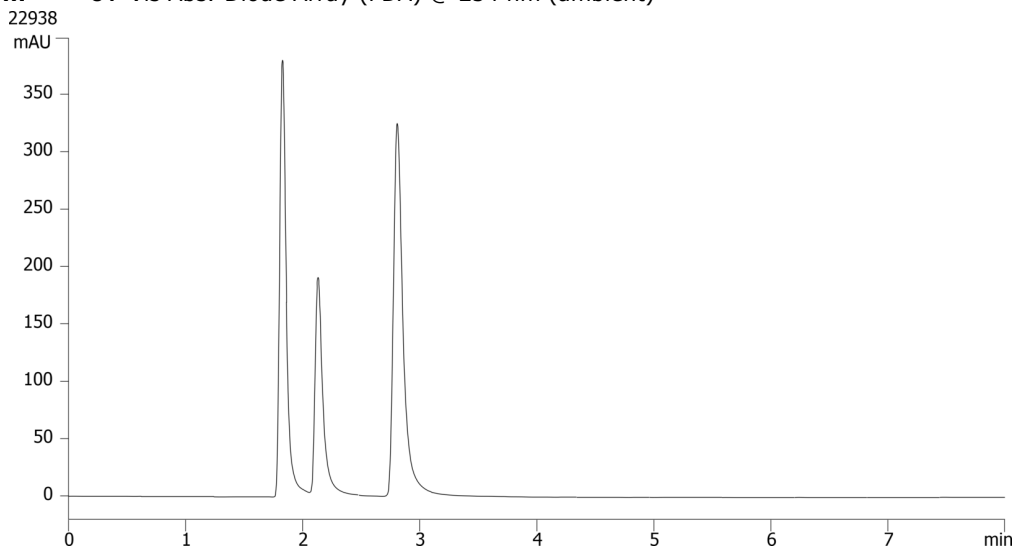
Flow Rate: 0.8 mL/min

Col. Temp.: ambient

Detection: UV-Vis Abs.-Diode Array (PDA) @ 254 nm (ambient)



Products used in this application:



ANALYTES:

- 1 Uracil
- 2 Procainamide
- 3 N-Acetylprocainamide

