

# HPLC Application

ID No.: 22945

## Aromatic acid mix#1 on Luna 5u C18(2) 150x4.6mm

**Column:** Luna® 5 µm C18(2) 100 Å, LC Column 150 x 4.6 mm, Ea

**Dimensions:** 150 x 4.6 mm ID

**Order No:** 00F-4252-E0

**Elution Type:** Isocratic

**Eluent A:** 0.1% H3PO4 in Water

**Eluent B:** Acetonitrile with 0.1% H3PO4

Gradient Profile:	Step No.	Time (min)	Pct A	Pct B
	1	0	50	50

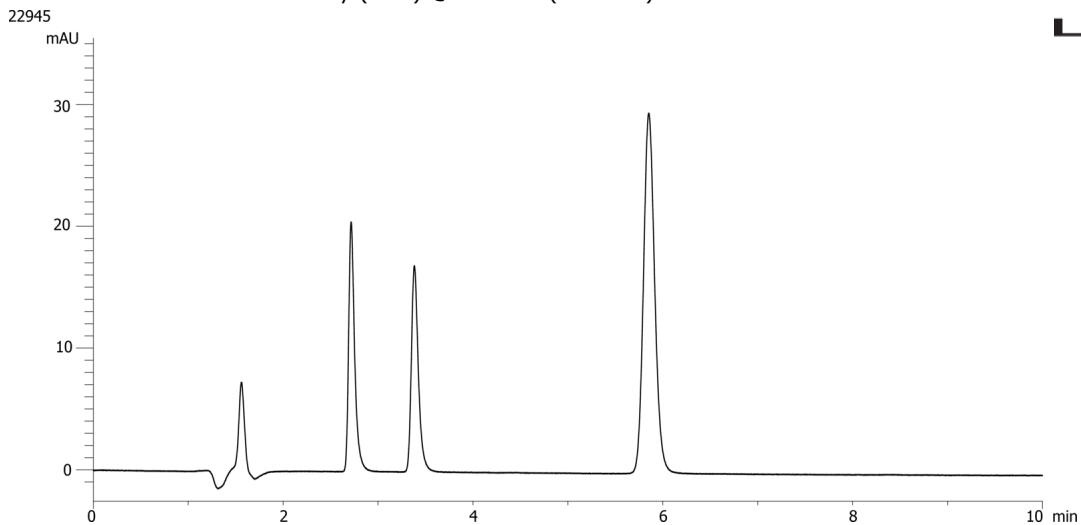
**Flow Rate:** 1 mL/min

**Col. Temp.:** ambient

**Detection:** UV-Vis Abs.-Diode Array (PDA) @ 254 nm (ambient)



Products used in this application:



### ANALYTES:

- 1 Benzoic acid
- 2 o-Toluic acid
- 3 Naproxen