

HPLC Application

ID No.: 22987

Peptide map on Kinetex 2.6 µm EVO C18 (Phosphorylase B)

Column: Kinetex[®] 2.6µm EVO C18 100 Å, LC Column 150 x 4.6 mm, Ea

Dimensions: 150 x 4.6 mm ID

Order No: 00F-4725-E0

Elution Type: Gradient

Eluent A: 0.1% TFA/2% ACN in Water

Eluent B: 0.1% TFA/ ACN (10:90)

Gradient Profile:	Step No.	Time (min)	Pct A	Pct B
	1	0	98	2
	2	68	30	70

Flow Rate: 1.5 mL/min

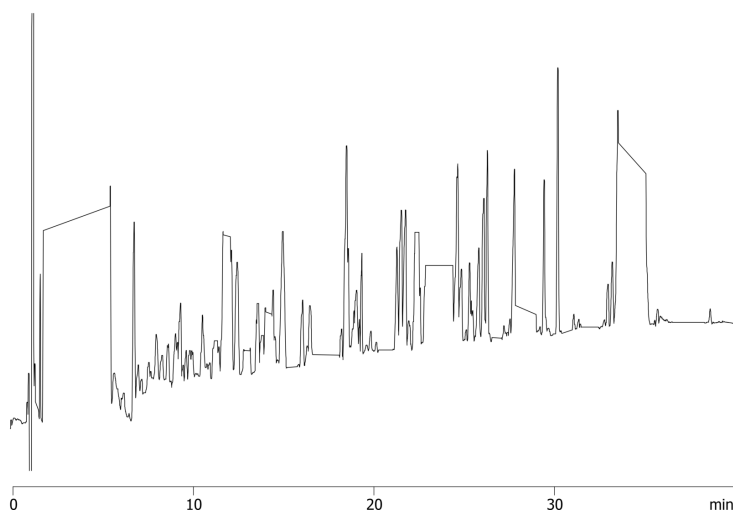
Col. Temp.: 60 °C

Detection: UV-Vis Abs.-Variable Wave.(UV) @ 214 nm (ambient)

Analyst Note: Forced degradation protocol:

Reconstitute 1 mg of cefaclor neat standard with 1.0 mL of 1 M HCl. Heat the solution at 60 °C for 6 hours then neutralize with 1.0 mL of 1 M NaOH. Refrigerate until ready to inject.

22987



ANALYTES:

- 1 Peptide map (phosphorylase b)



Products used in this application:

